

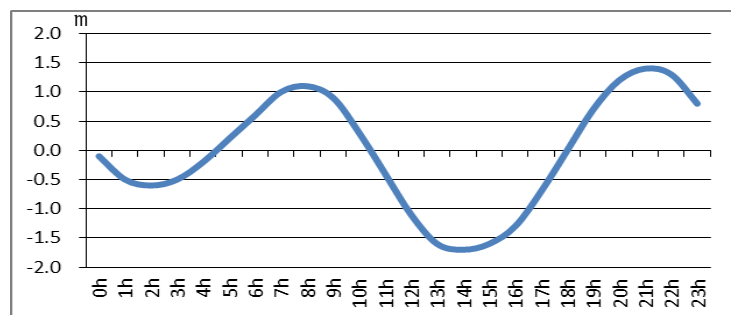
浜名湖今切口付近の強い流れに注意!

浜名湖今切口 5月 1日～ 5月15日の潮流推算値です。

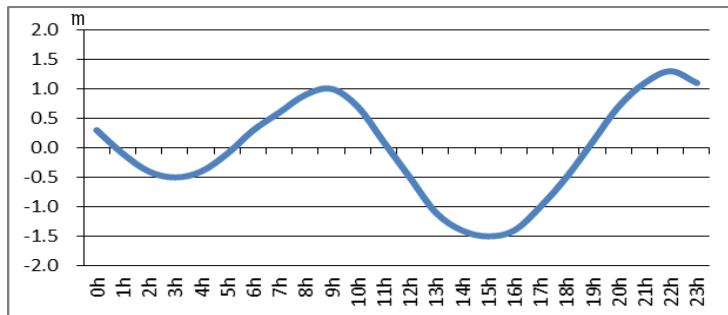
推算地ですので、実際と異なる可能性がありますのでご注意ください。

単位は m/sec で、(+)は海から浜名湖に向かう流れ、(-)は浜名湖から海に向かう流れです。

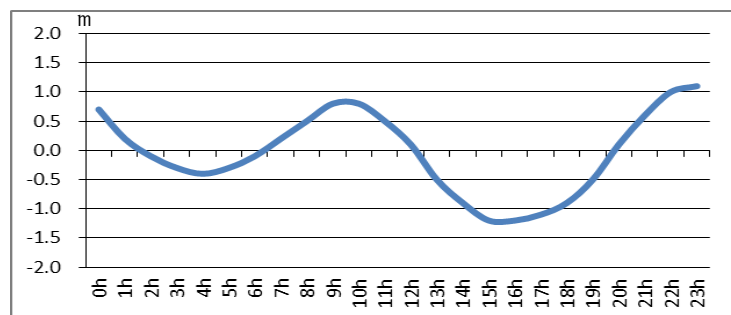
2017. 5. 1



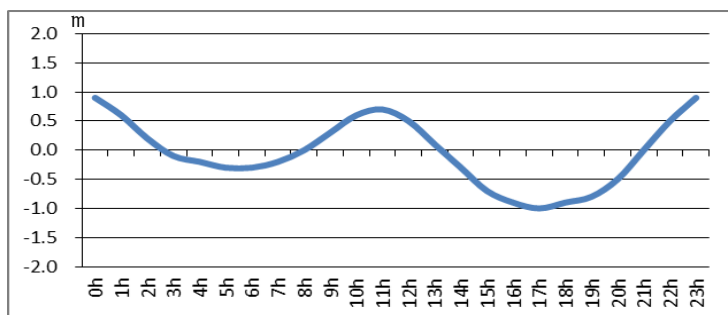
2017. 5. 2



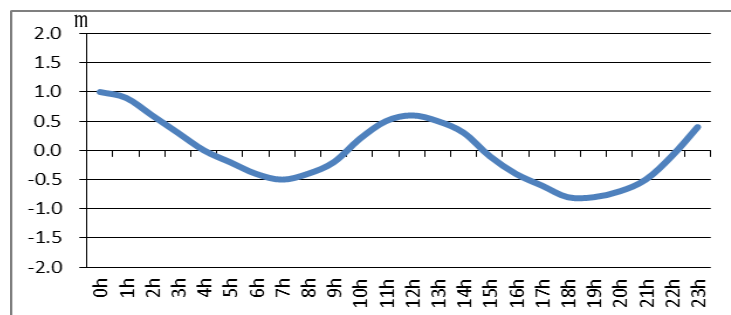
2017. 5. 3



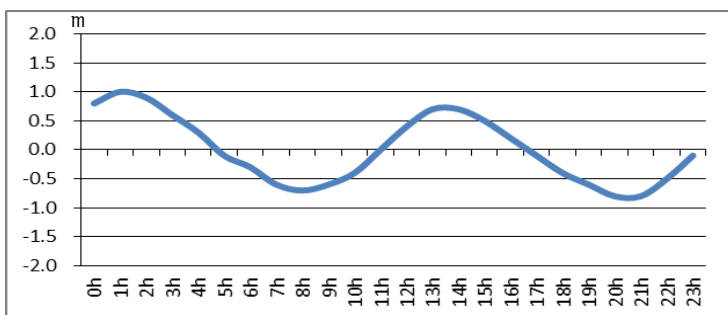
2017. 5. 4



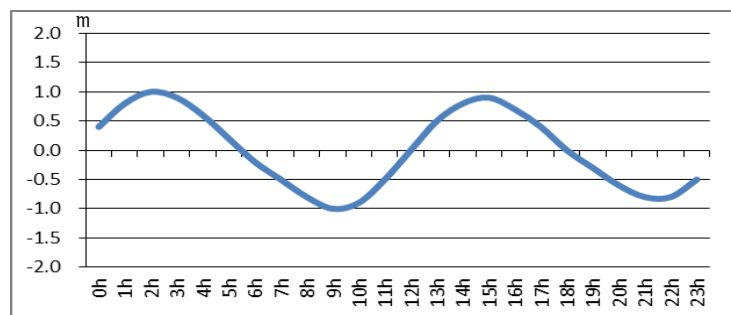
2017. 5. 5



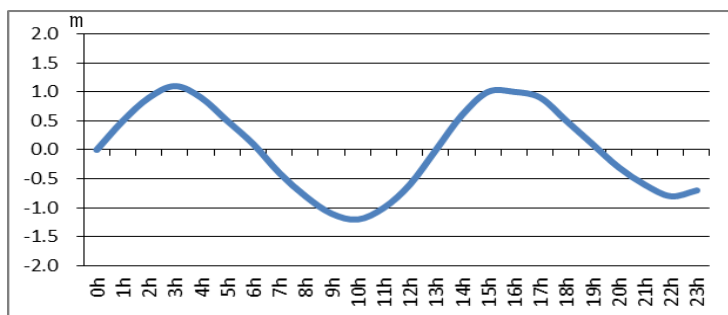
2017. 5. 6



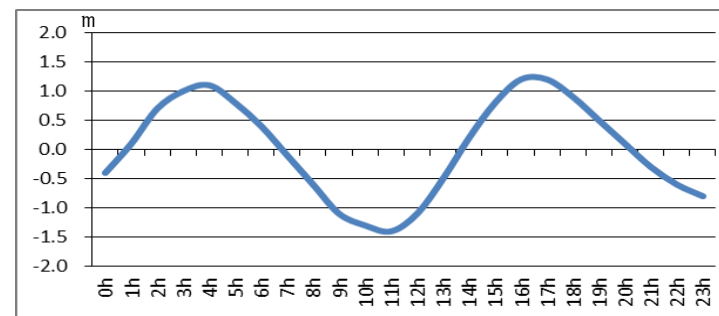
2017. 5. 7



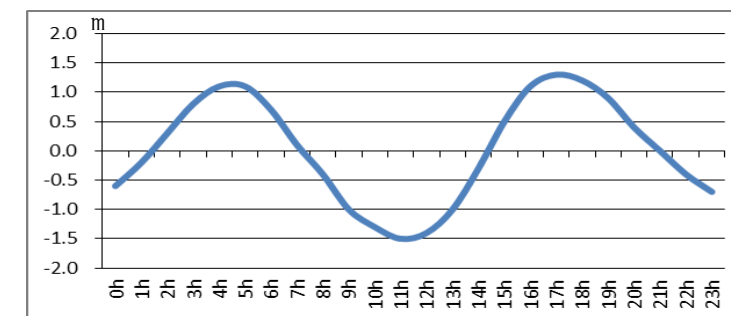
2017. 5. 8



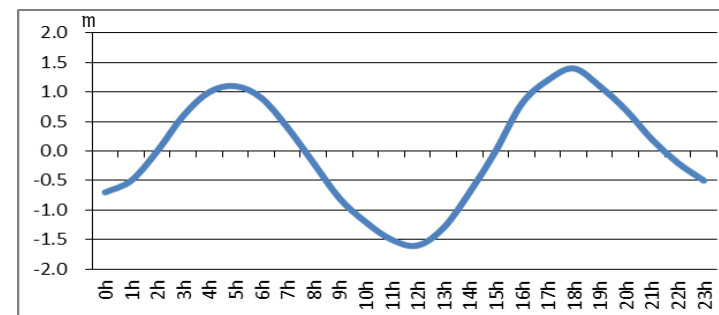
2017. 5. 9



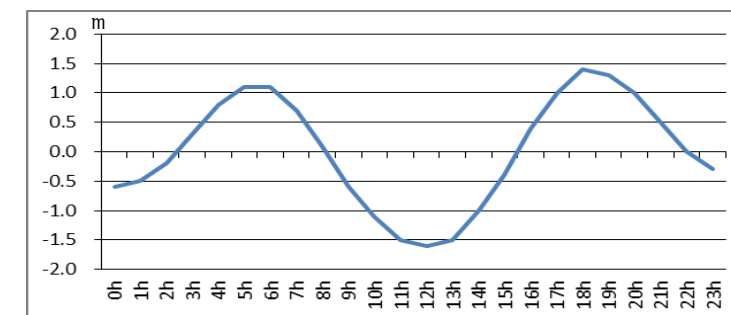
2017. 5. 10



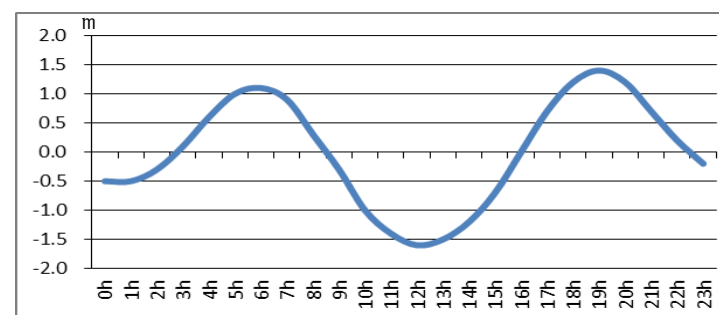
2017. 5. 11



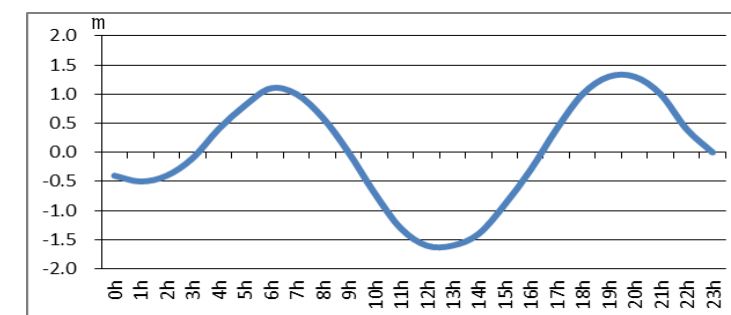
2017. 5. 12



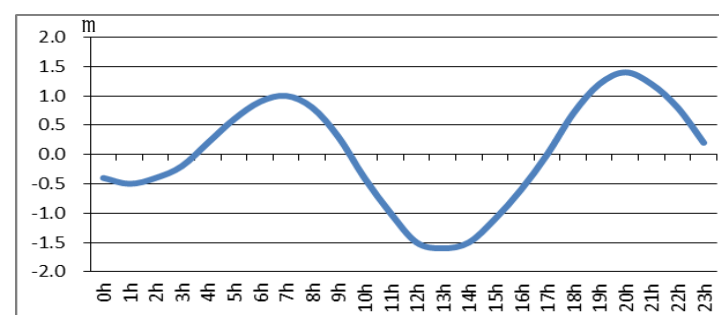
2017. 5. 13



2017. 5. 14



2017. 5. 15



問合せ先



(一財) 日本水路協会 〒144-0041 東京都大田区羽田空港 1-6-6

TEL 03-5708-7135 FAX 03-5708-7075 <http://www.jha.or.jp>

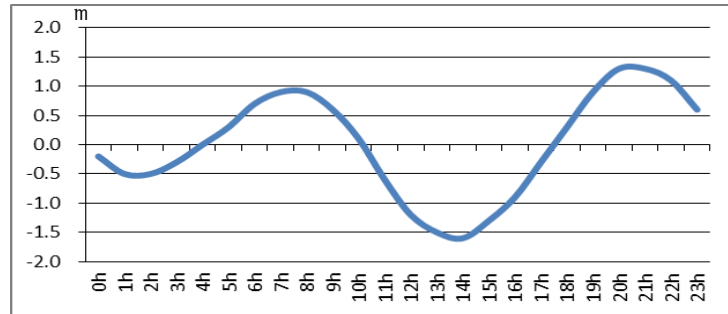
浜名湖今切口付近の強い流れに注意！

浜名湖今切口 5月16日～5月31日の潮流推算値です。

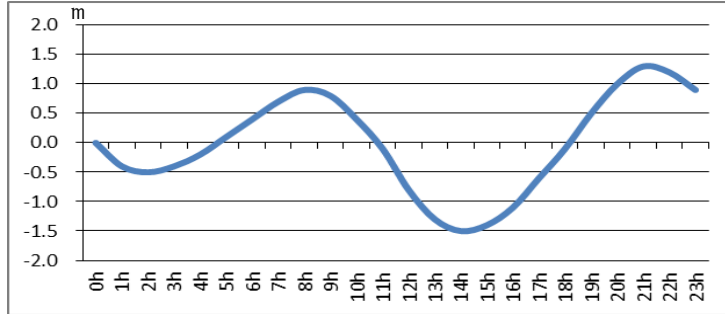
推算地ですので、実際と異なる可能性がありますのでご注意ください。

単位は m/sec で、(+)は海から浜名湖に向かう流れ、(-)は浜名湖から海に向かう流れです。

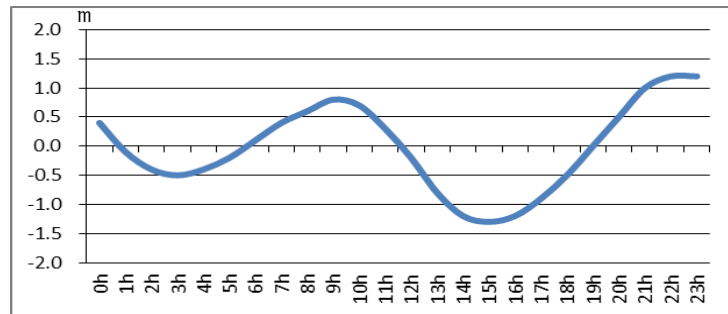
2017. 5. 16



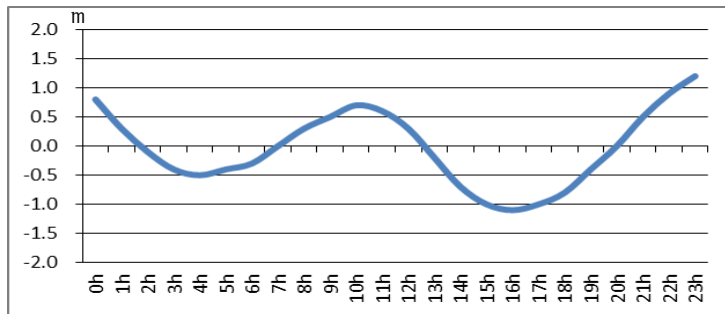
2017. 5. 17



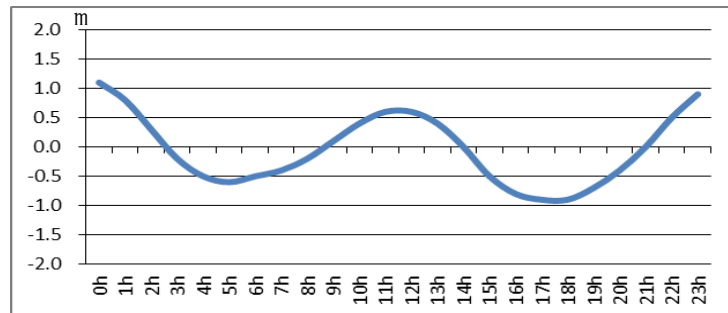
2017. 5. 18



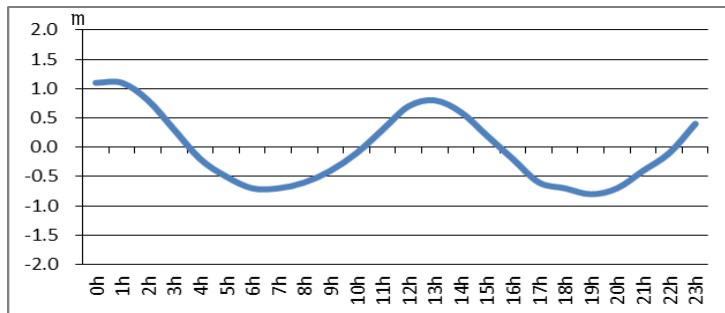
2017. 5. 19



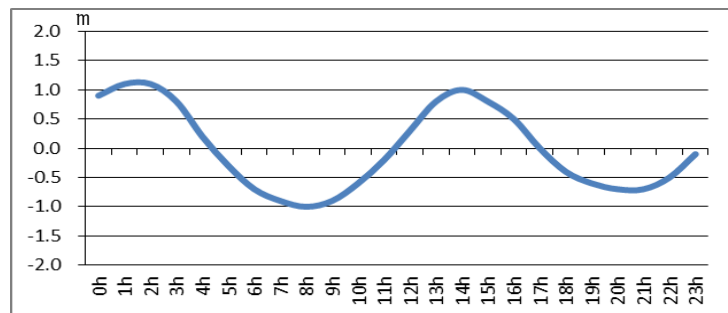
2017. 5. 20



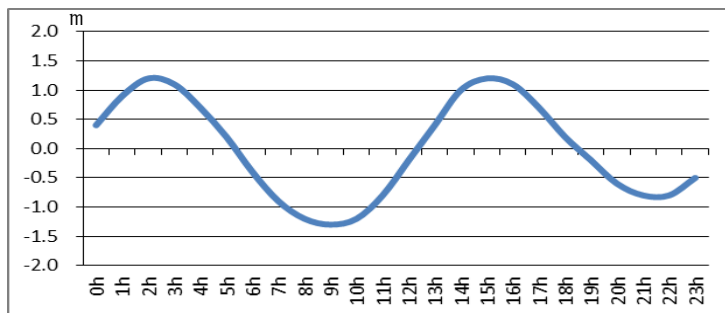
2017. 5. 21



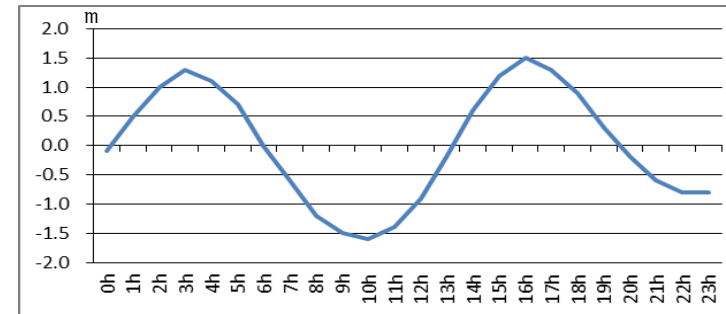
2017. 5. 22



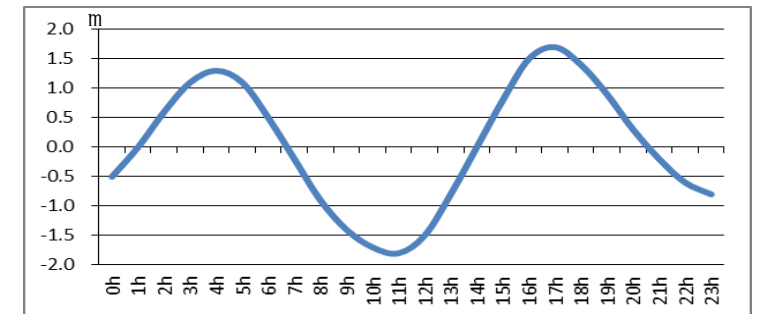
2017. 5. 23



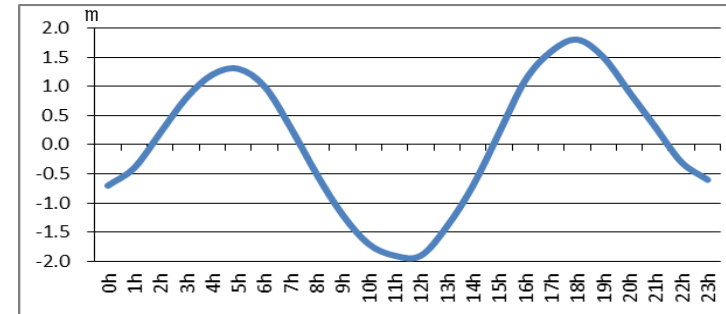
2017. 5. 24



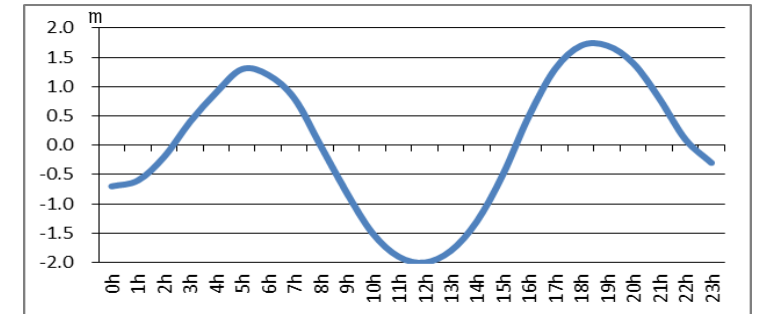
2017. 5. 25



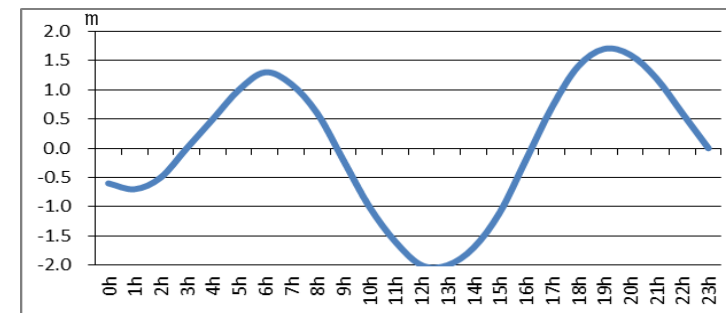
2017. 5. 26



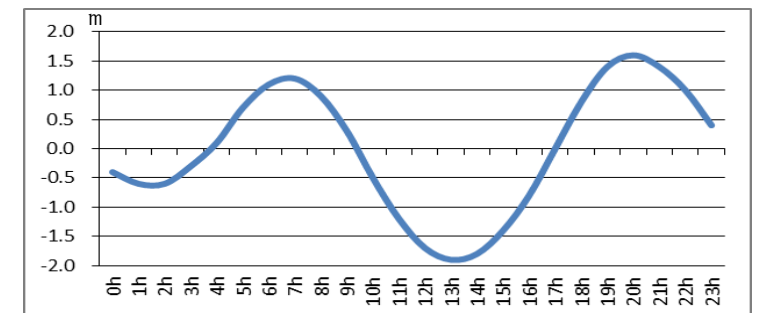
2017. 5. 27



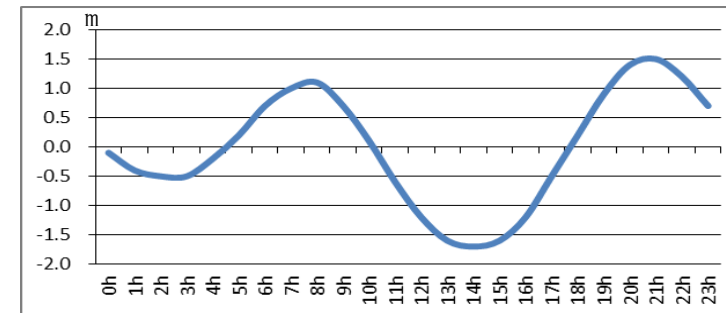
2017. 5. 28



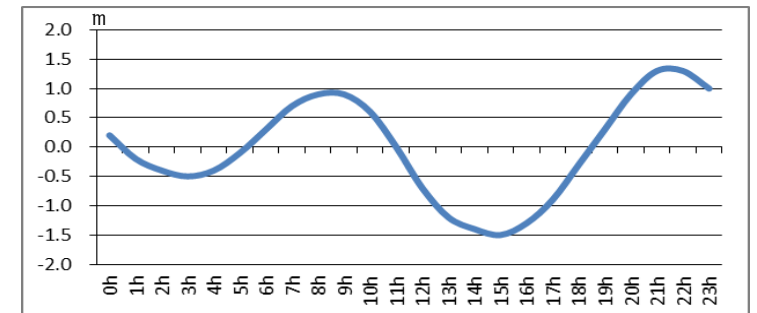
2017. 5. 29



2017. 5. 30



2017. 5. 31



問合せ先



(一財) 日本水路協会 〒144-0041 東京都大田区羽田空港 1-6-6

TEL 03-5708-7135 FAX 03-5708-7075 <http://www.jha.or.jp>