

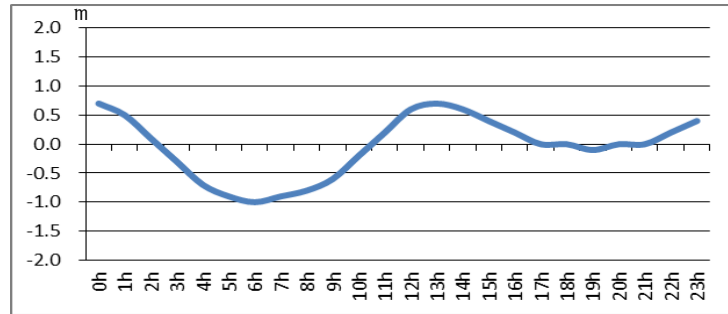
浜名湖今切口付近の強い流れに注意!

浜名湖今切口 9月 1日～ 9月15日の潮流推算値です。

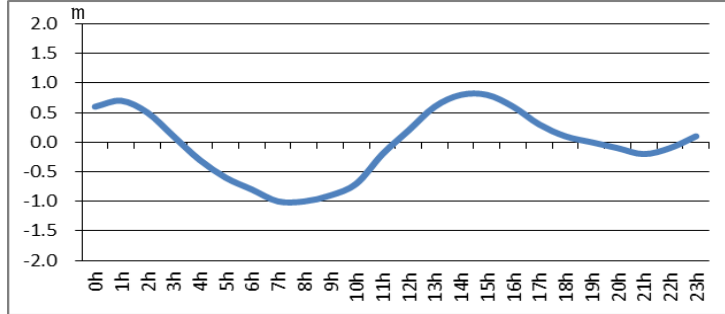
推算値ですので、実際と異なる可能性がありますのでご注意ください。

単位は m/sec で、(+)は海から浜名湖に向かう流れ、(-)は浜名湖から海に向かう流れです。

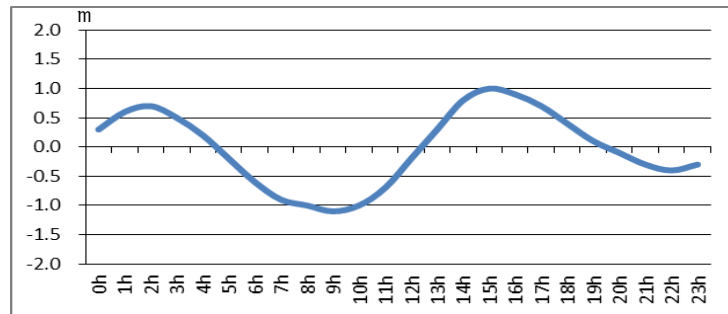
2017. 9. 1



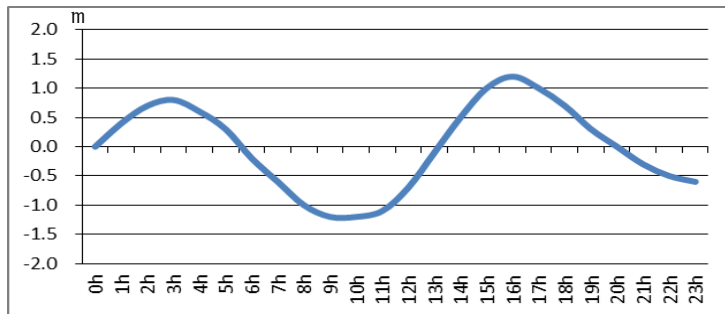
2017. 9. 2



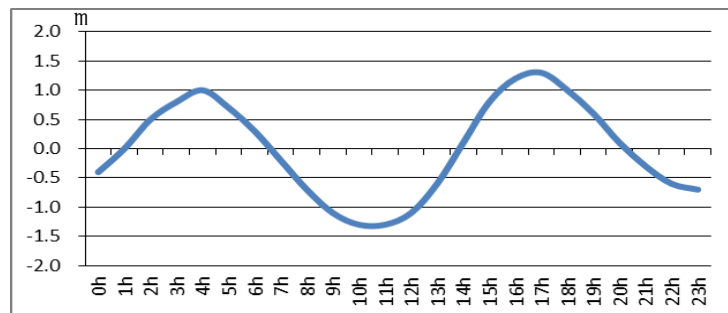
2017. 9. 3



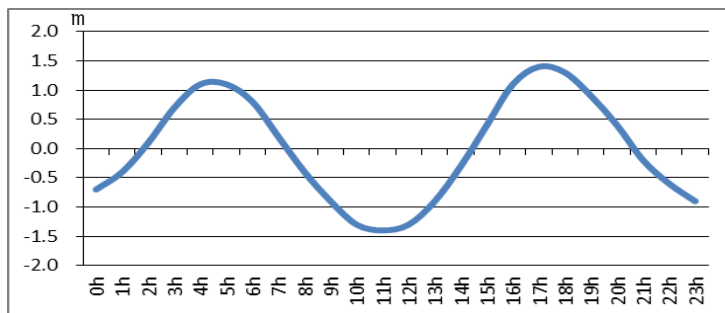
2017. 9. 4



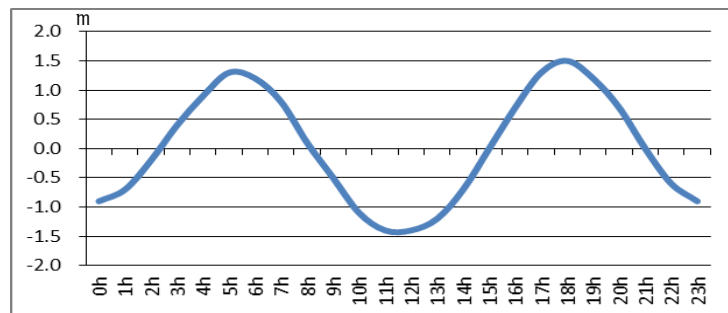
2017. 9. 5



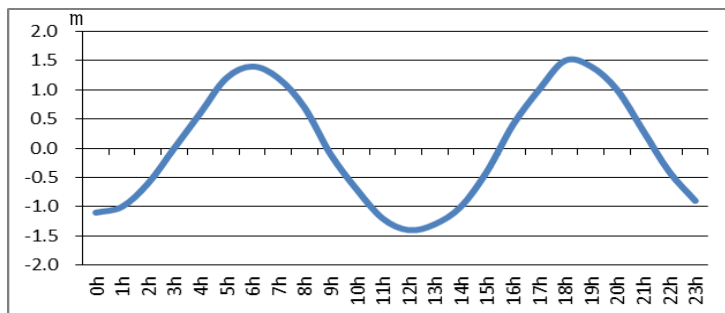
2017. 9. 6



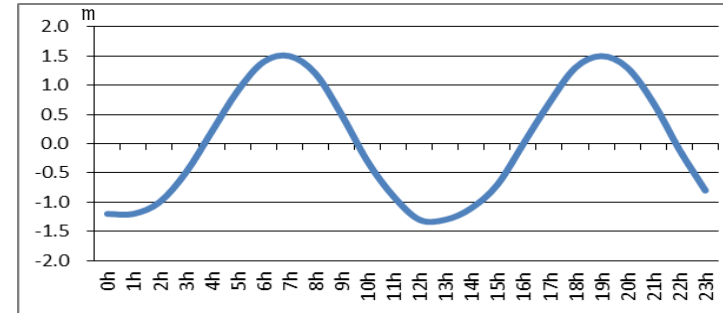
2017. 9. 7



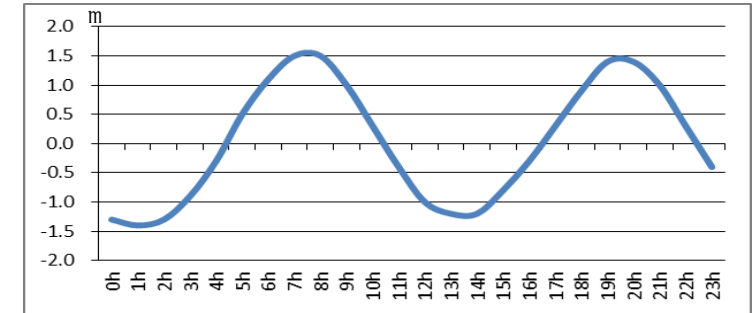
2017. 9. 8



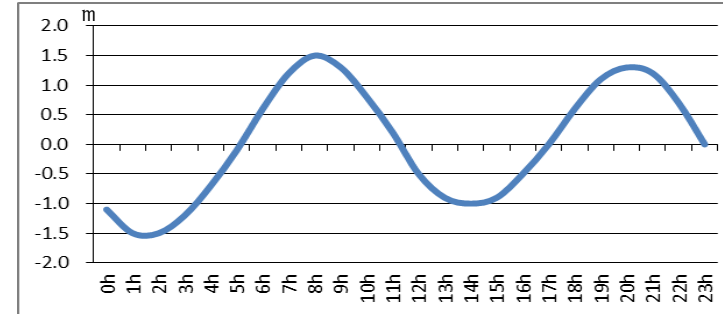
2017. 9. 9



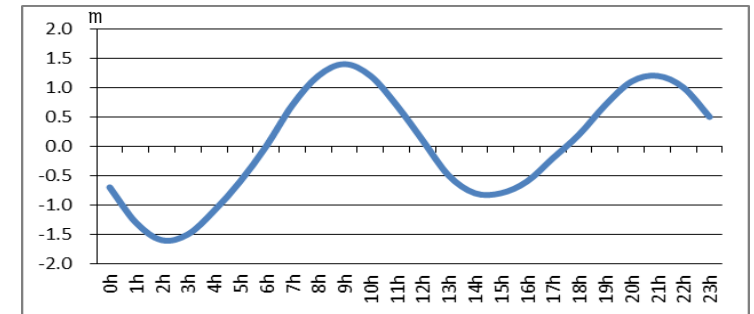
2017. 9. 10



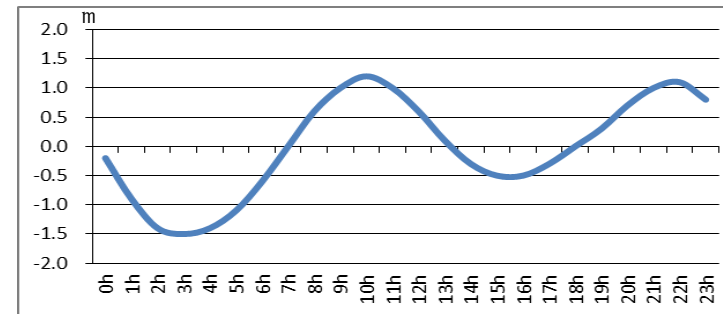
2017. 9. 11



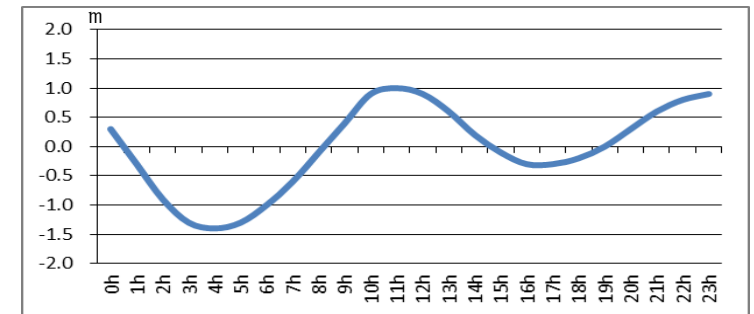
2017. 9. 12



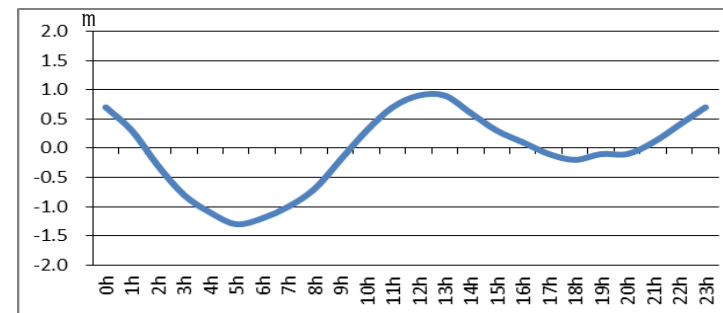
2017. 9. 13



2017. 9. 14



2017. 9. 15



問合せ先



(一財) 日本水路協会 〒144-0041 東京都大田区羽田空港 1-6-6

TEL 03-5708-7135 FAX 03-5708-7075 <http://www.jha.or.jp>

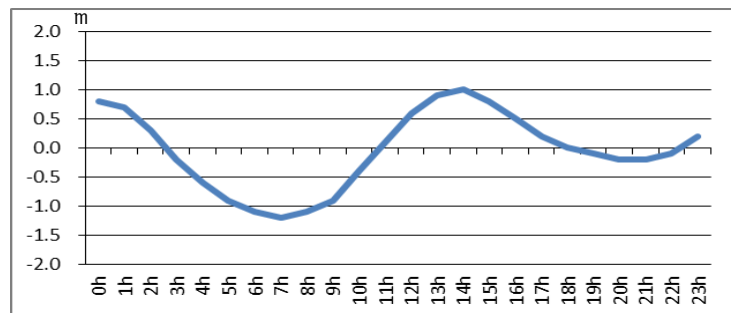
浜名湖今切口付近の強い流れに注意!

浜名湖今切口 9月16日～9月30日の潮流推算値です。

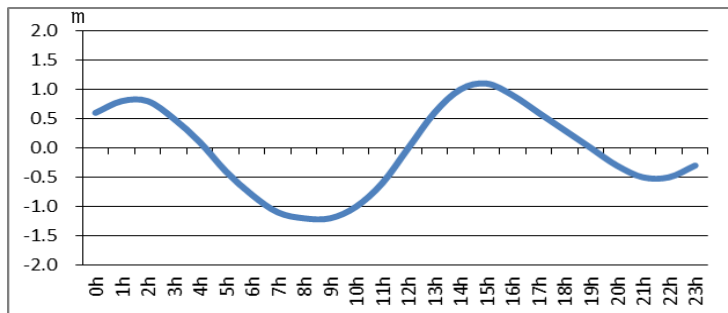
推算値ですので、実際と異なる可能性がありますのでご注意ください。

単位は m/sec で、(+)は海から浜名湖に向かう流れ、(-)は浜名湖から海に向かう流れです。

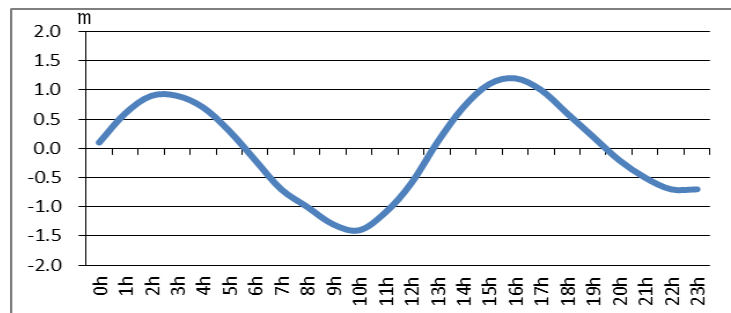
2017. 9. 16



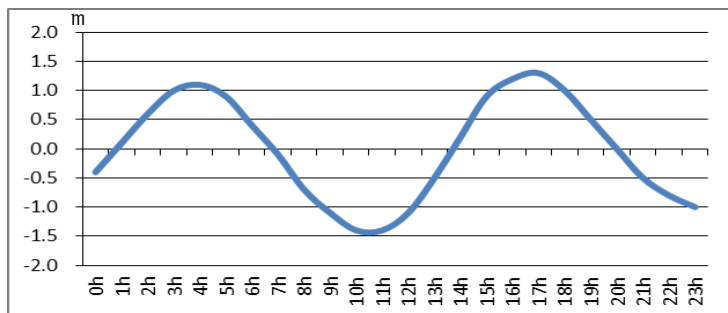
2017. 9. 17



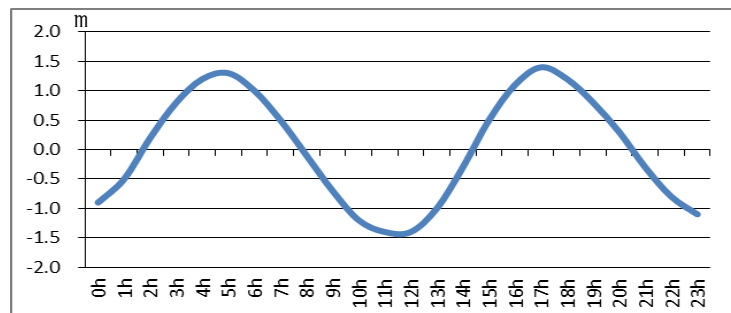
2017. 9. 18



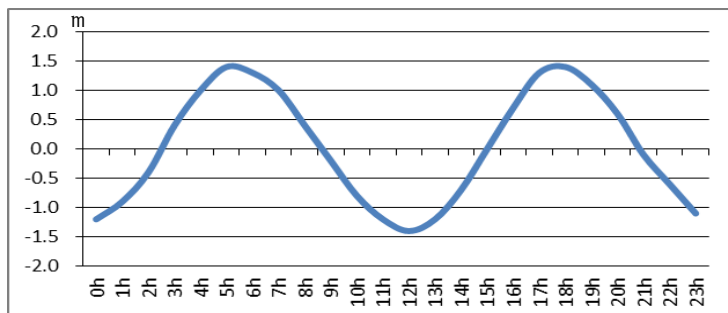
2017. 9. 19



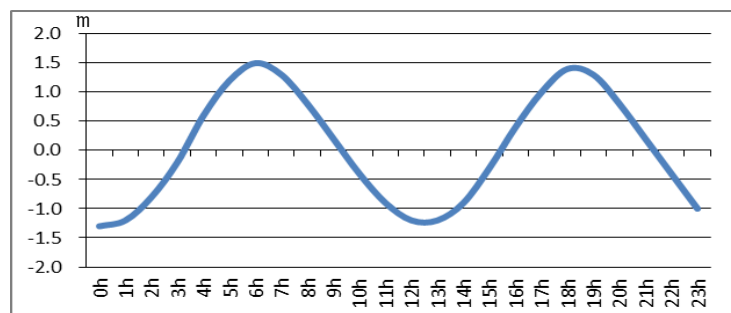
2017. 9. 20



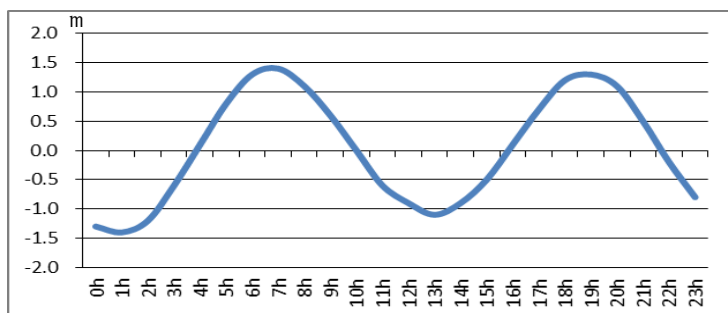
2017. 9. 21



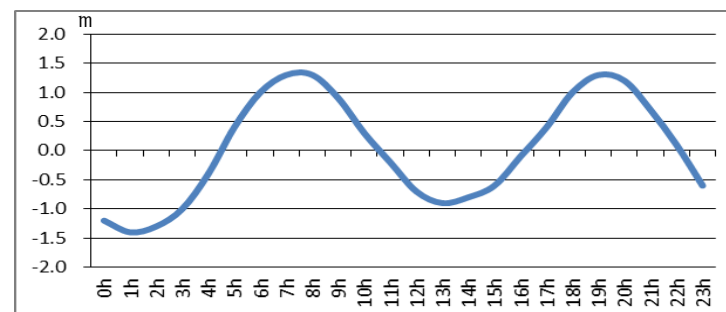
2017. 9. 22



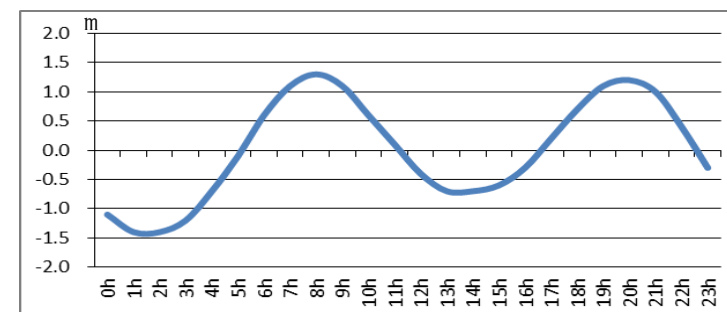
2017. 9. 23



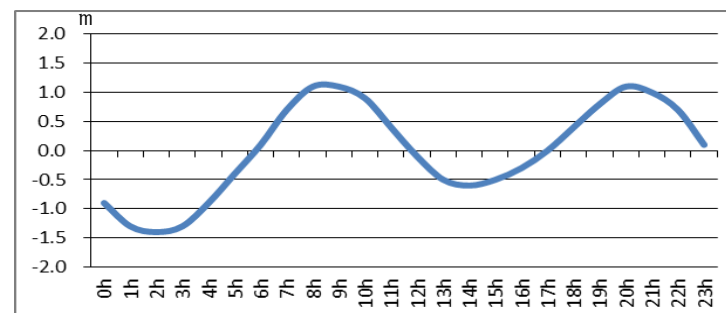
2017. 9. 24



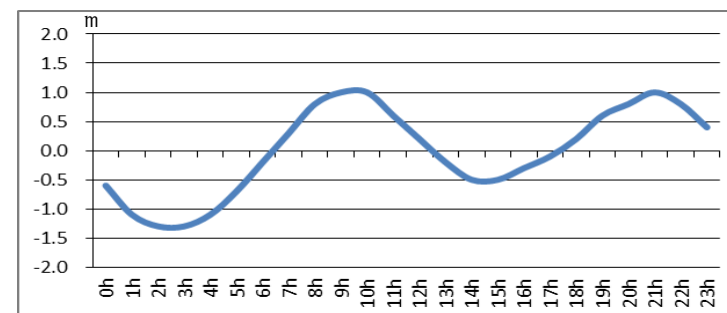
2017. 9. 25



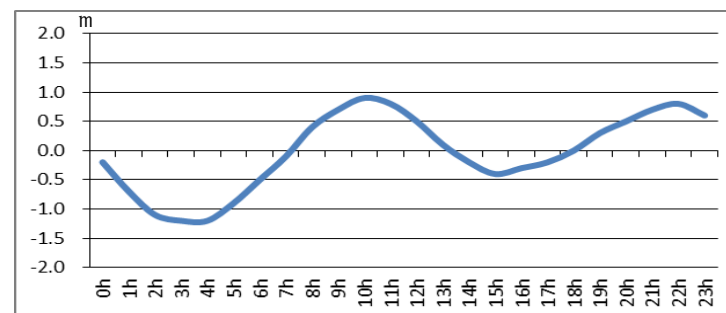
2017. 9. 26



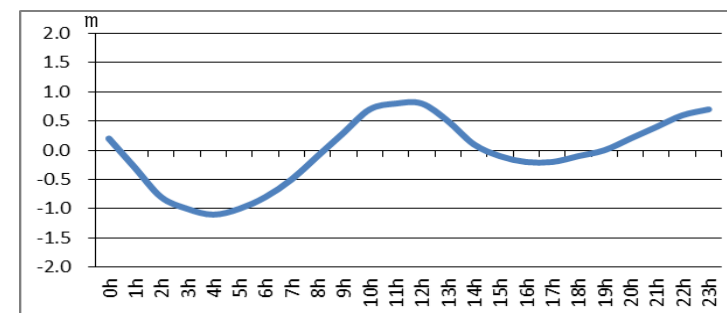
2017. 9. 27



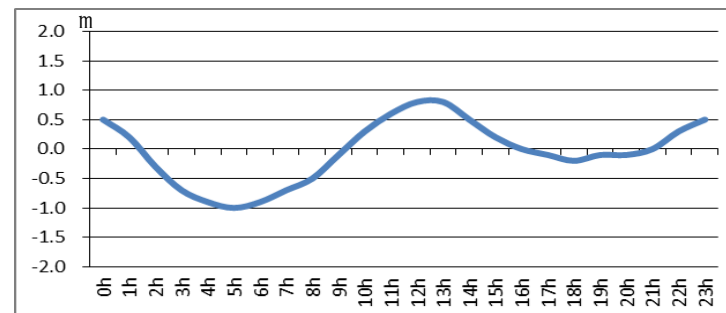
2017. 9. 28



2017. 9. 29



2017. 9. 30



問合せ先



(一財) 日本水路協会 〒144-0041 東京都大田区羽田空港 1-6-6

TEL 03-5708-7135 FAX 03-5708-7075 <http://www.jha.or.jp>