

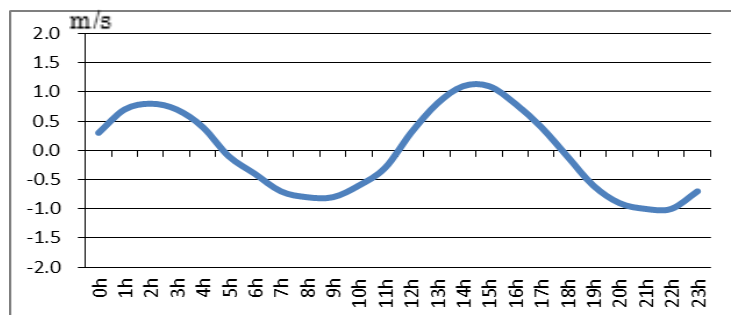
# 浜名湖今切口付近の強い流れに注意！

浜名湖今切口11月 1日～11月15日の潮流推算値です。

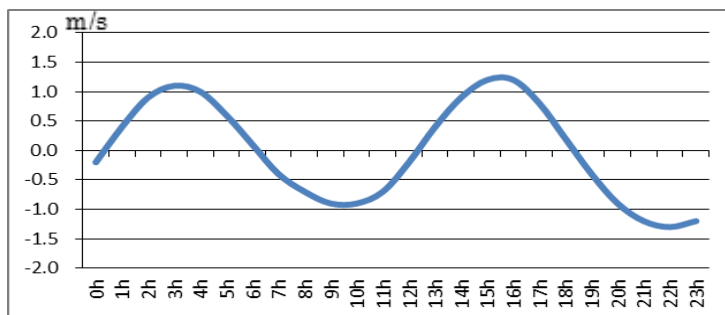
推算地ですので、実際と異なる可能性がありますのでご注意ください。

単位は m/sec で、(+)は海から浜名湖に向かう流れ、(-)は浜名湖から海に向かう流れです。

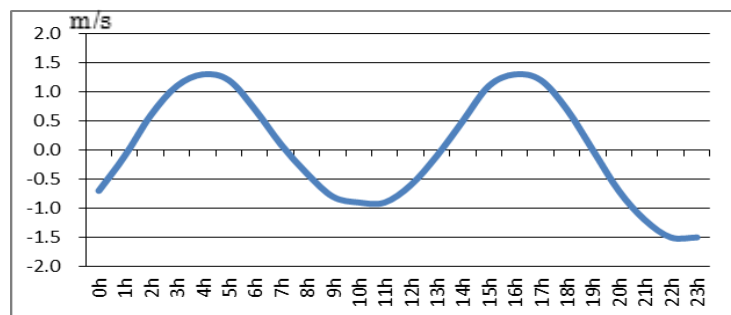
2017.11. 1



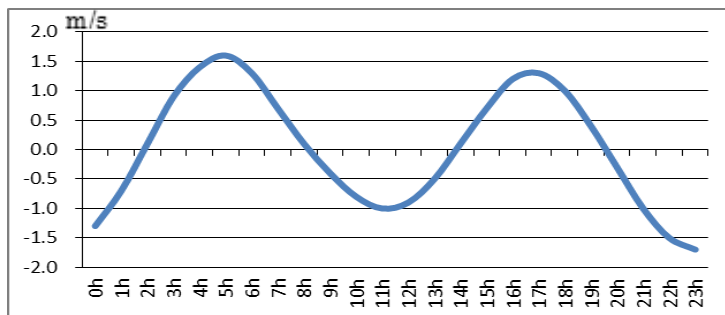
2017.11. 2



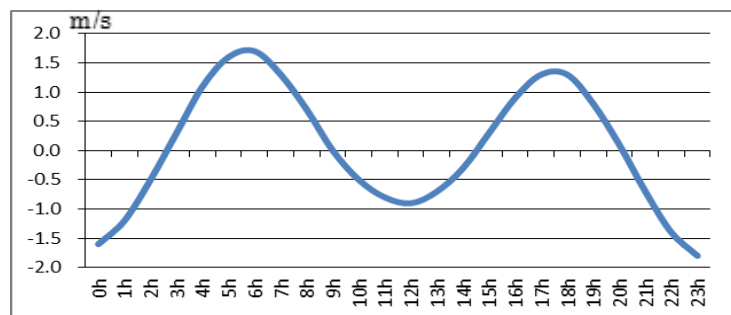
2017.11. 3



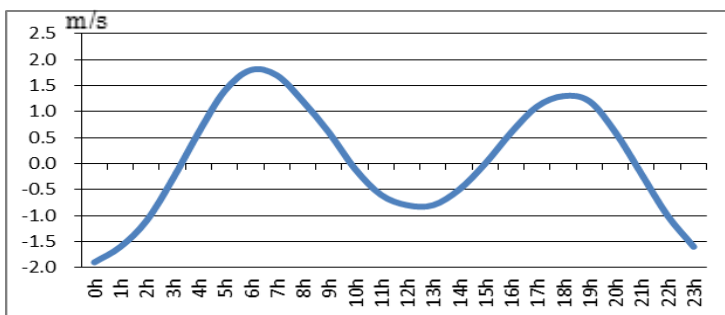
2017.11. 4



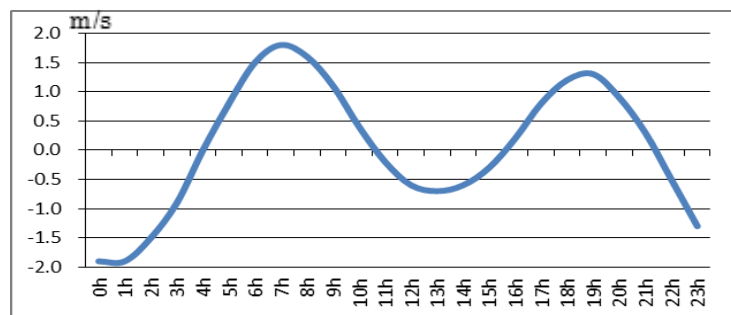
2017.11. 5



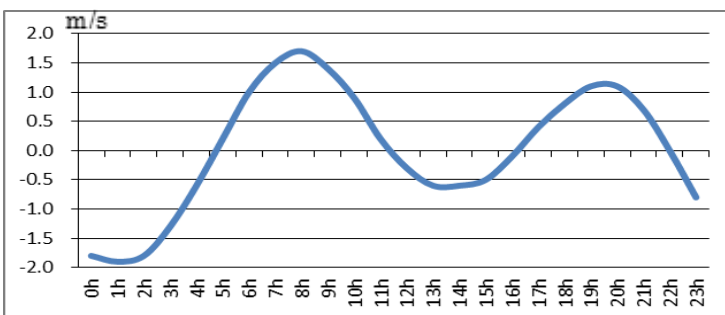
2017.11. 6



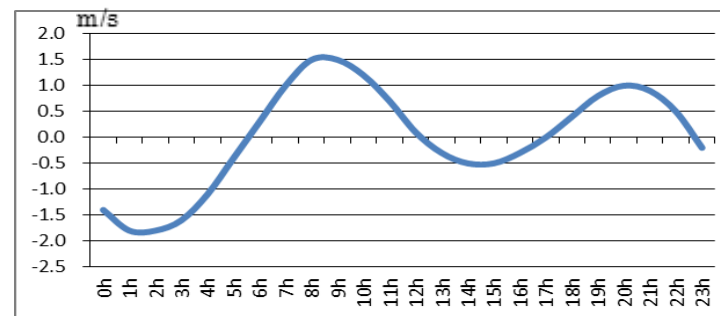
2017.11. 7



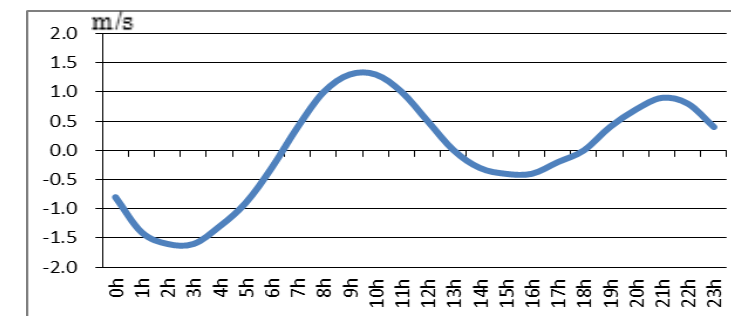
2017.11. 8



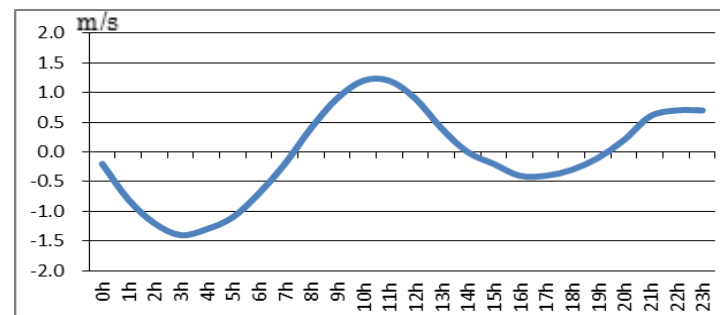
2017.11. 9



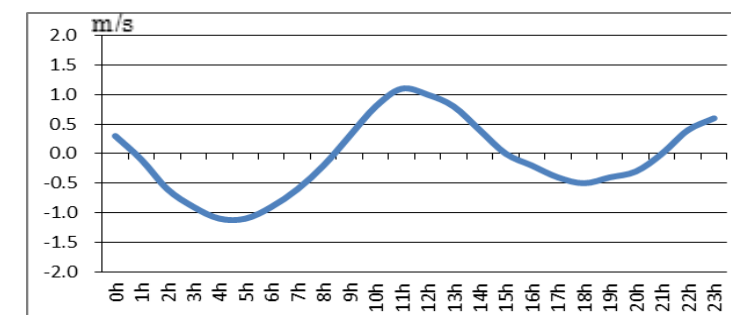
2017.11.10



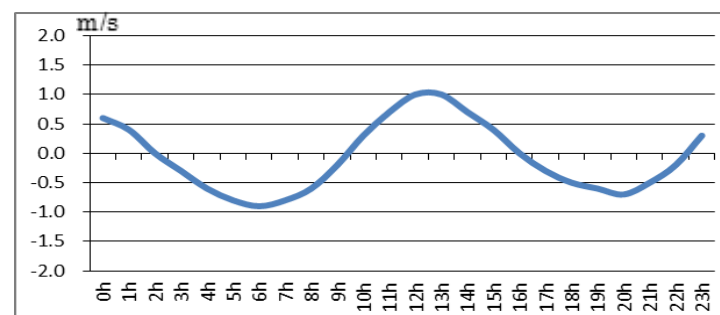
2017.11.11



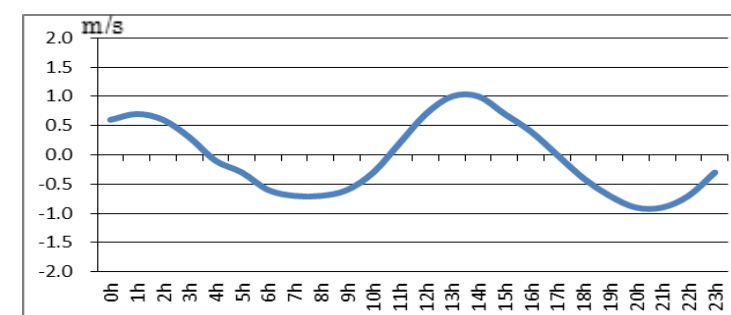
2017.11.12



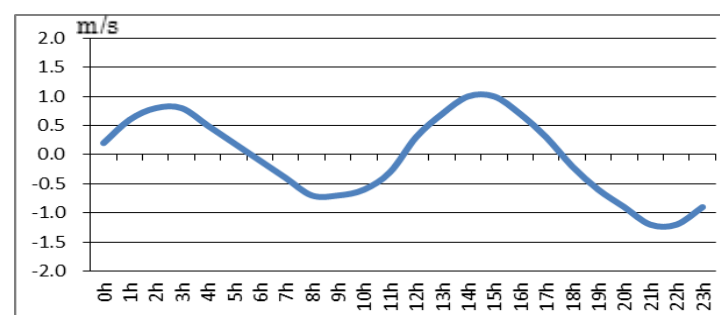
2017.11.13



2017.11.14



2017.11.15



問合せ先



(一財) 日本水路協会 〒144-0041 東京都大田区羽田空港 1-6-6

TEL 03-5708-7135 FAX 03-5708-7075 <http://www.jha.or.jp>

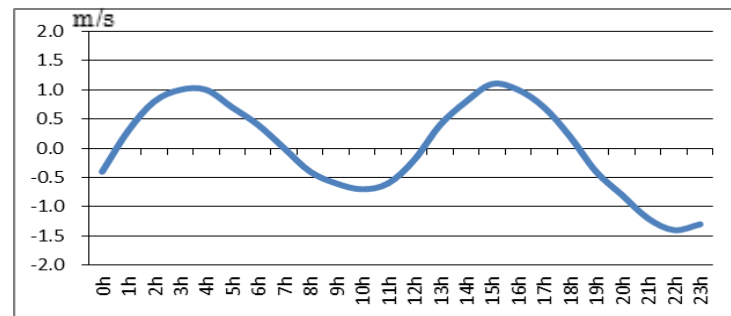
# 浜名湖今切口付近の強い流れに注意!

浜名湖今切口11月16日~11月30日の潮流推算値です。

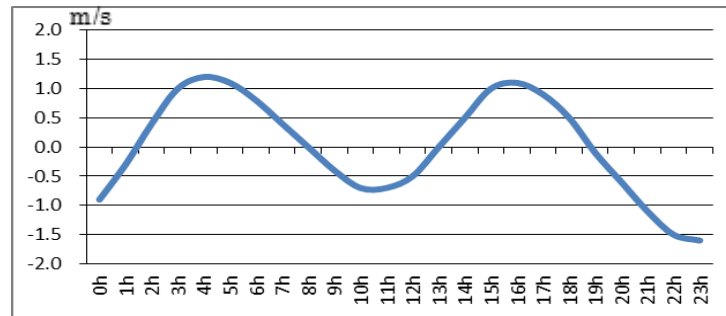
推算地ですので、実際と異なる可能性がありますのでご注意ください。

単位は m/sec で、(+)は海から浜名湖に向かう流れ、(-)は浜名湖から海に向かう流れです。

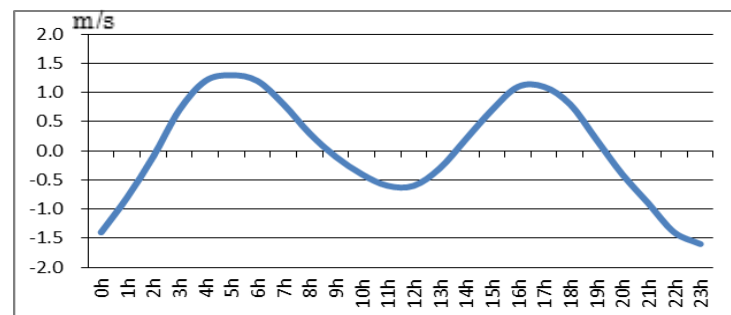
2017.11.16



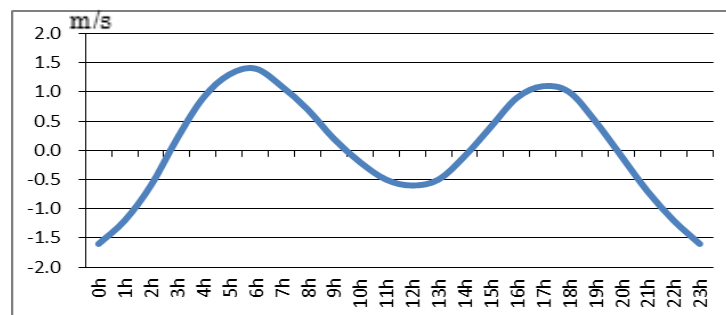
2017.11.17



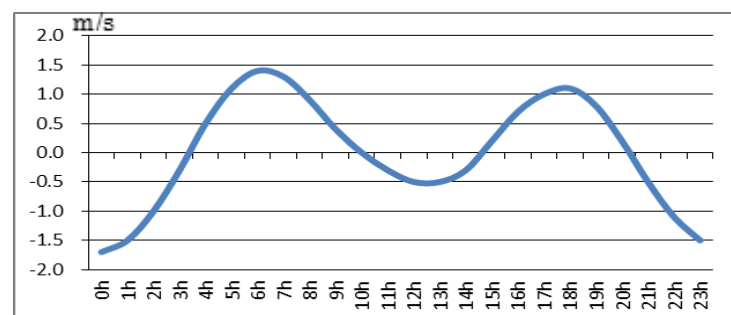
2017.11.18



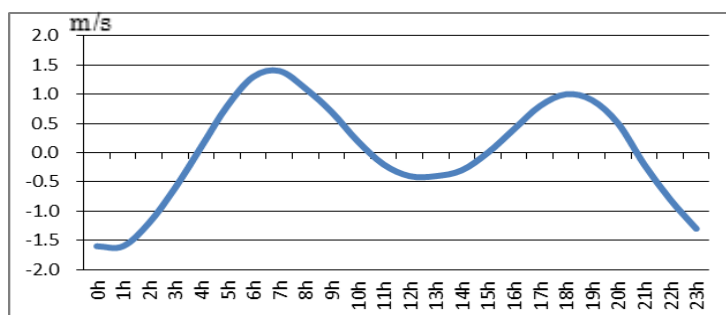
2017.11.19



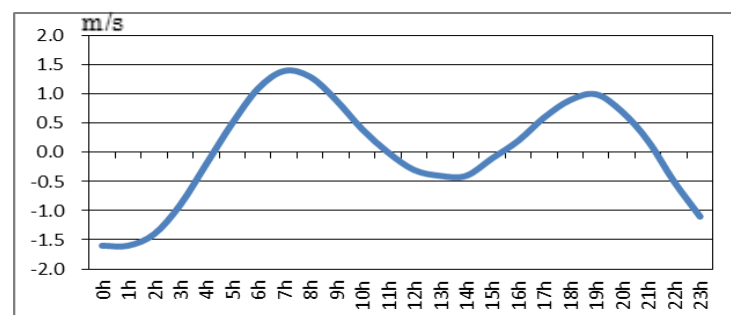
2017.11.20



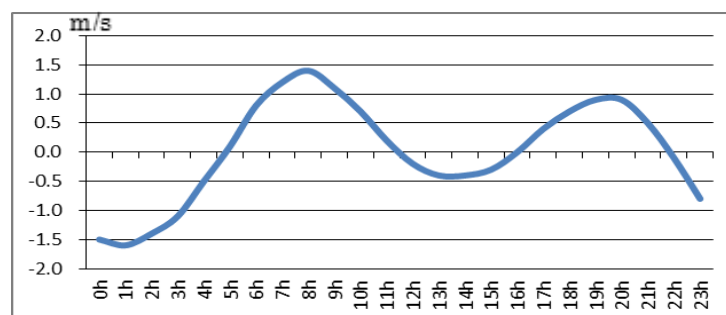
2017.11.21



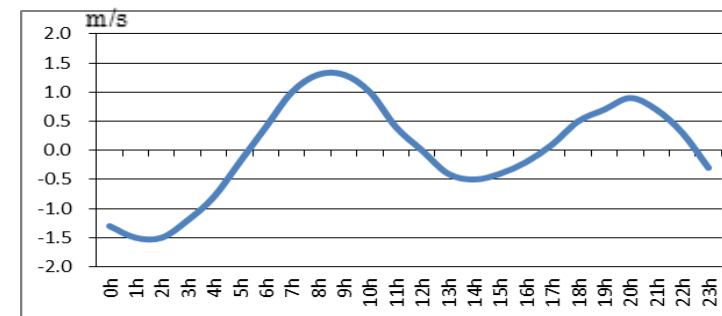
2017.11.22



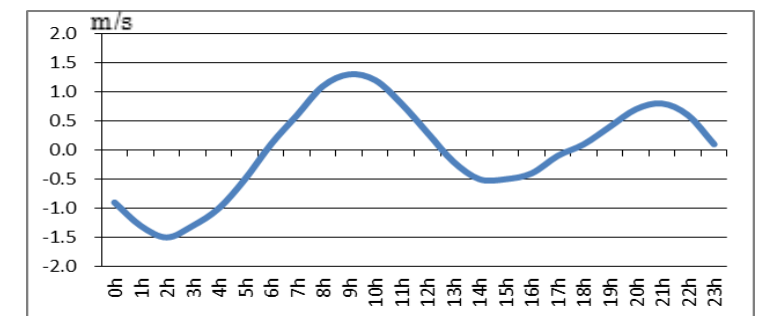
2017.11.23



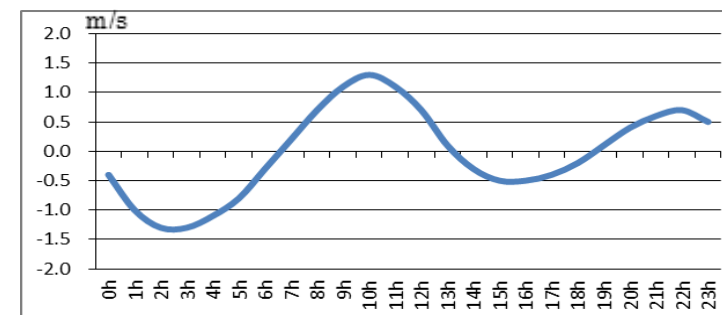
2017.11.24



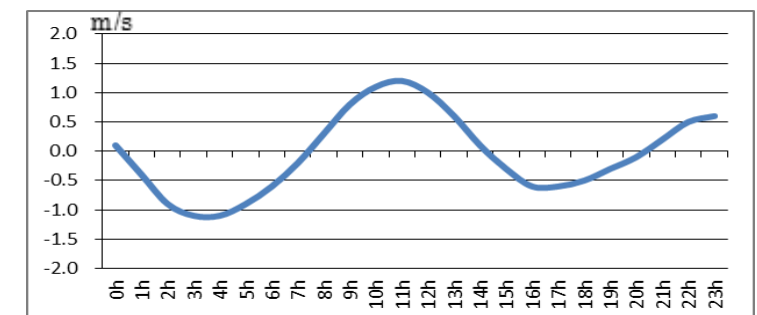
2017.11.25



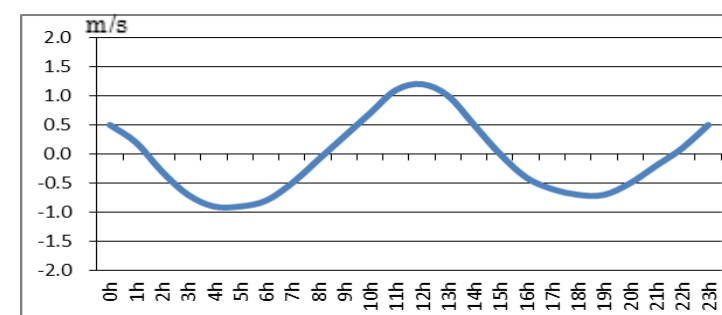
2017.11.26



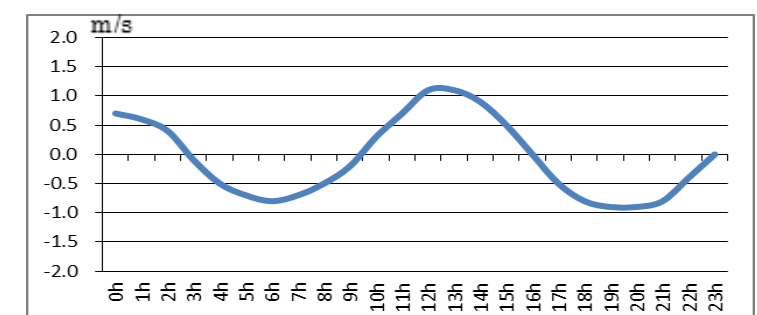
2017.11.27



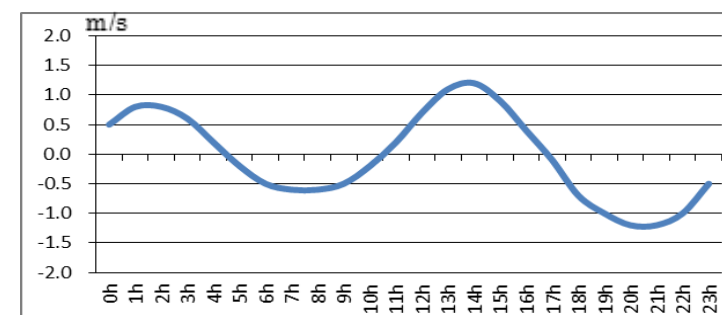
2017.11.28



2017.11.29



2017.11.30



問合せ先



(一財) 日本水路協会 〒144-0041 東京都大田区羽田空港 1-6-6

TEL 03-5708-7135 FAX 03-5708-7075 <http://www.jha.or.jp>