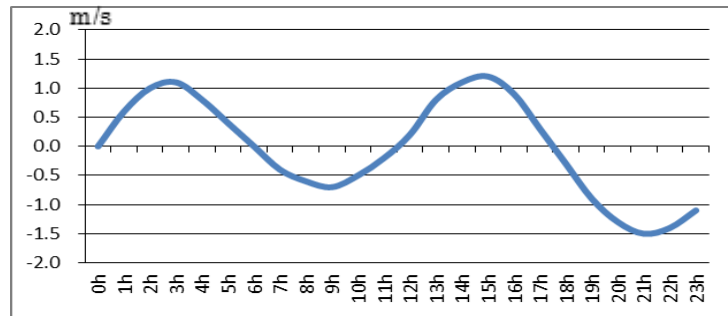


# 浜名湖今切口付近の強い流れに注意！

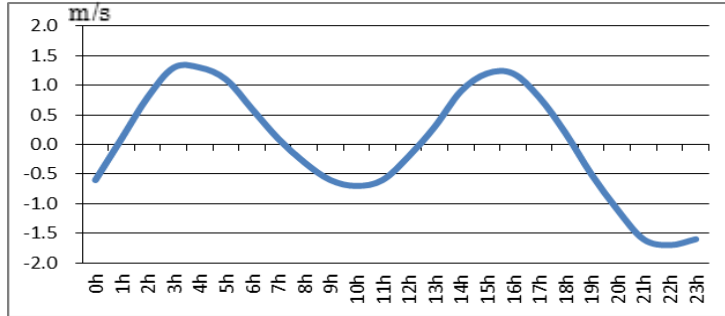
浜名湖今切口 12月 1日～ 12月15日の潮流推算値です。

推算地ですので、実際と異なる可能性がありますのでご注意ください。  
 単位は m/sec で、(+)は海から浜名湖に向かう流れ、(-)は浜名湖から海に向かう流れです。

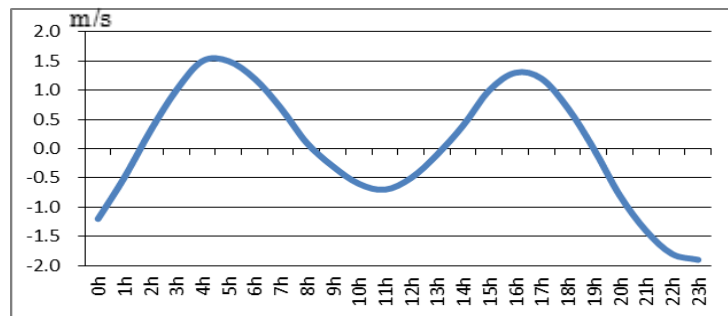
2017.12. 1



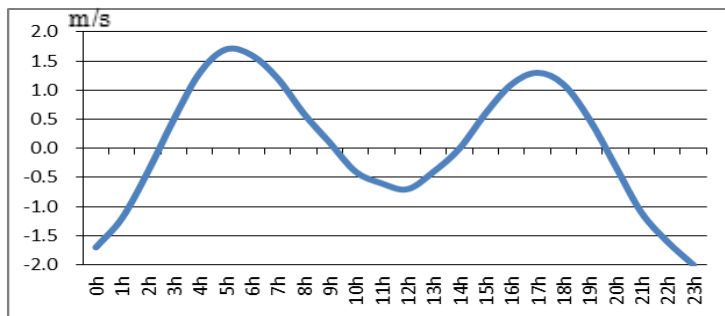
2017.12. 2



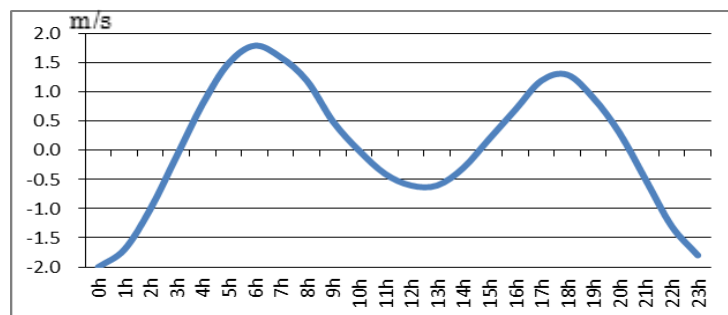
2017.12. 3



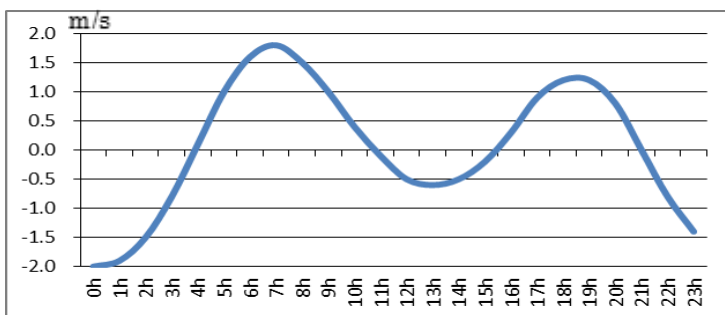
2017.12. 4



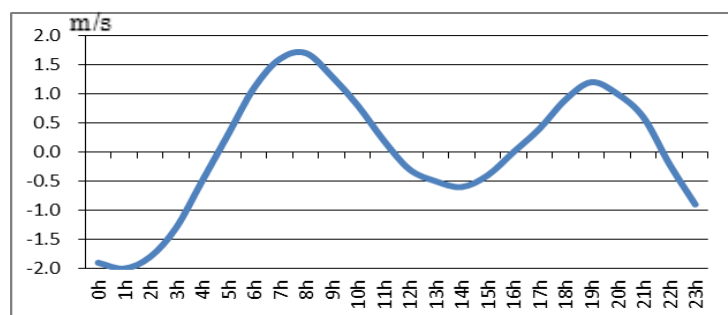
2017.12. 5



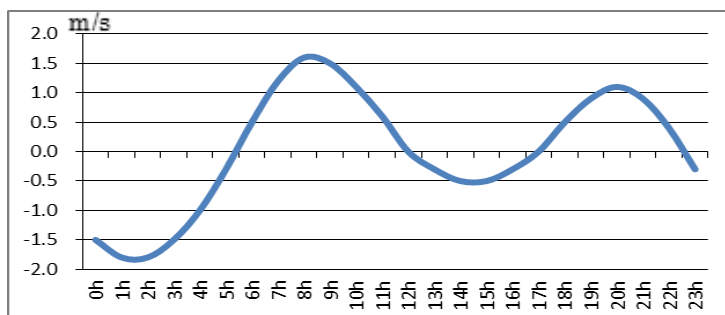
2017.12. 6



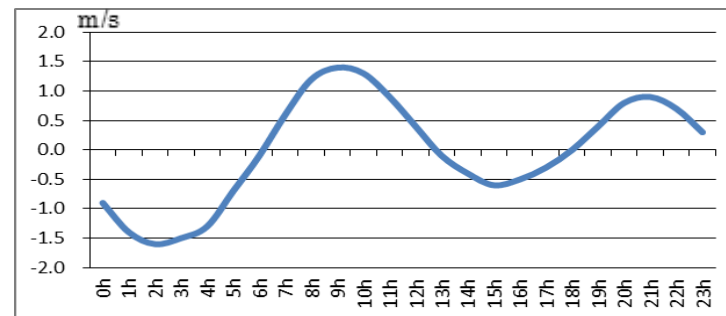
2017.12. 7



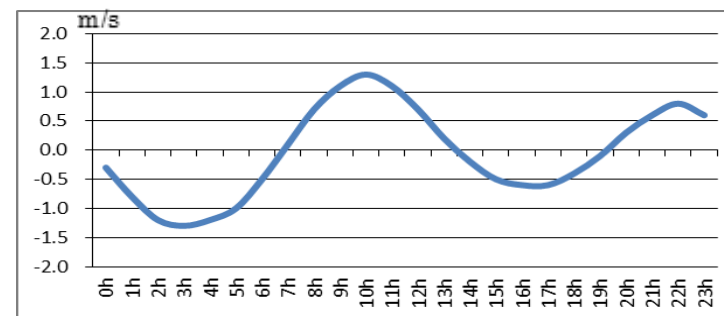
2017.12. 8



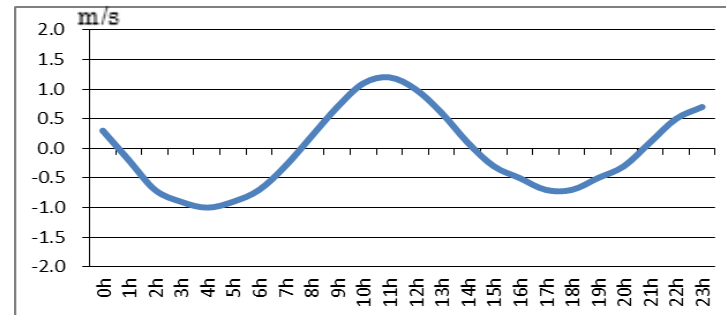
2017.12. 9



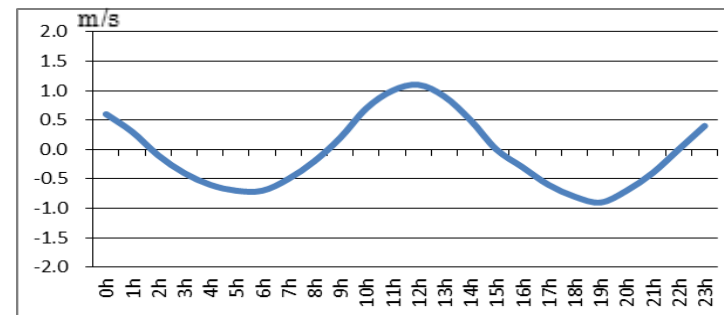
2017.12.10



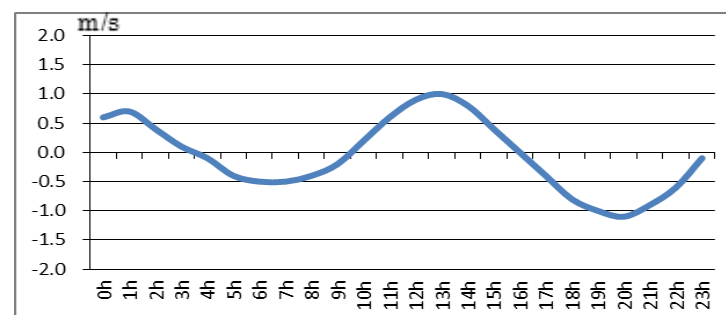
2017.12.11



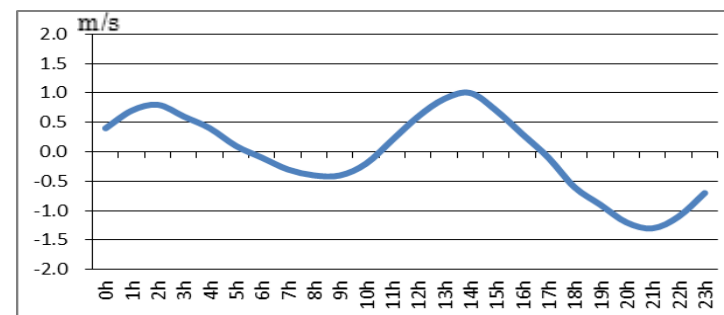
2017.12.12



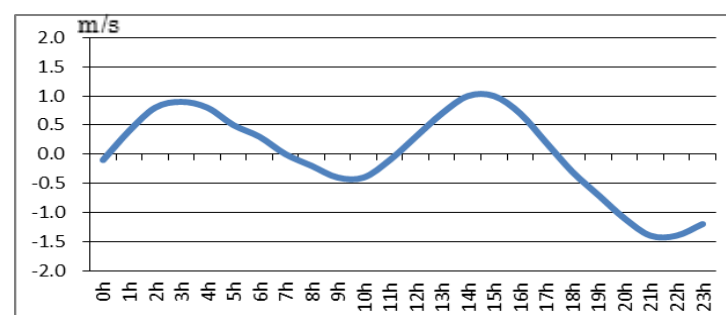
2017.12.13



2017.12.14



2017.12.15



問合せ先



(一財) 日本水路協会 〒144-0041 東京都大田区羽田空港 1-6-6

TEL 03-5708-7135 FAX 03-5708-7075 <http://www.jha.or.jp>

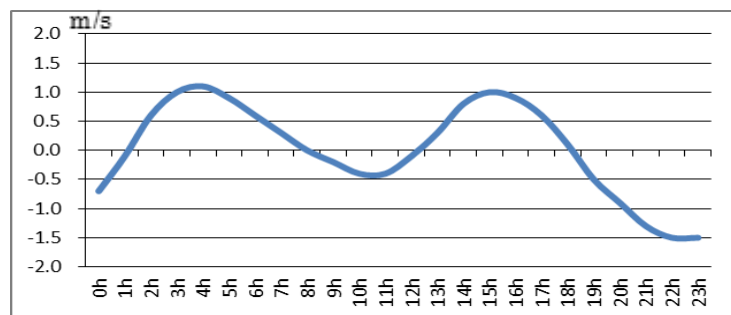
# 浜名湖今切口付近の強い流れに注意!

浜名湖今切口12月16日~12月31日の潮流推算値です。

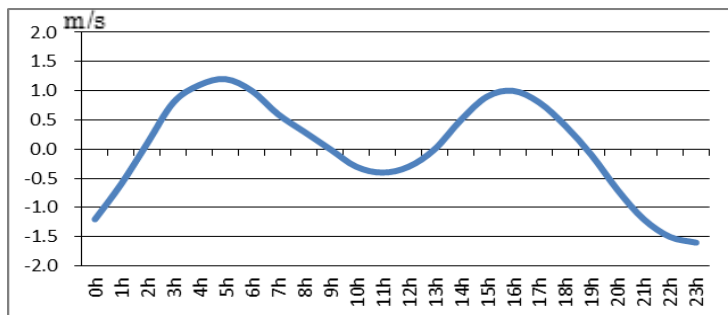
推算地ですので、実際と異なる可能性がありますのでご注意ください。

単位は m/sec で、(+)は海から浜名湖に向かう流れ、(-)は浜名湖から海に向かう流れです。

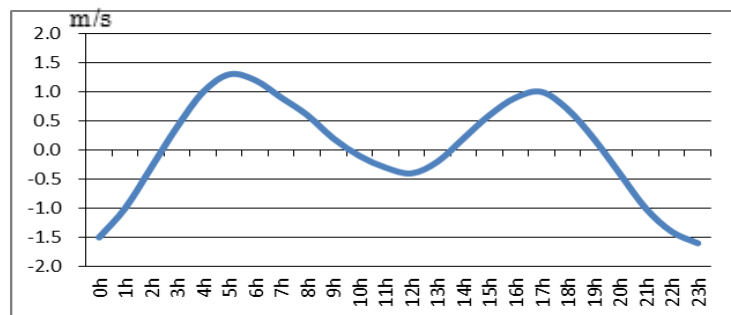
2017. 12. 16



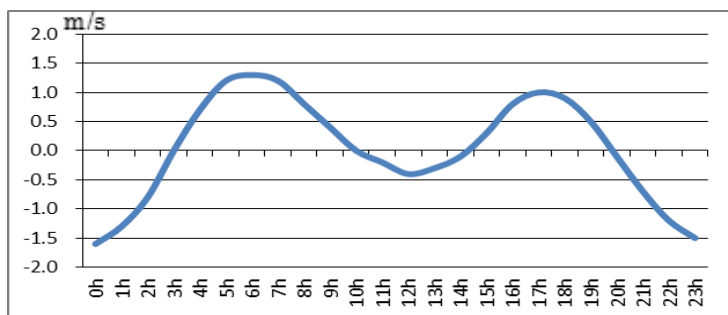
2017. 12. 17



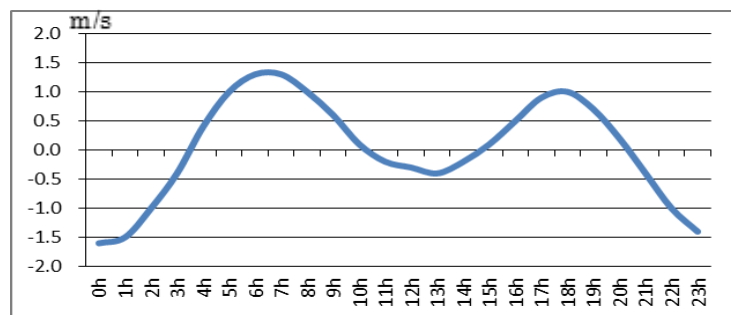
2017. 12. 18



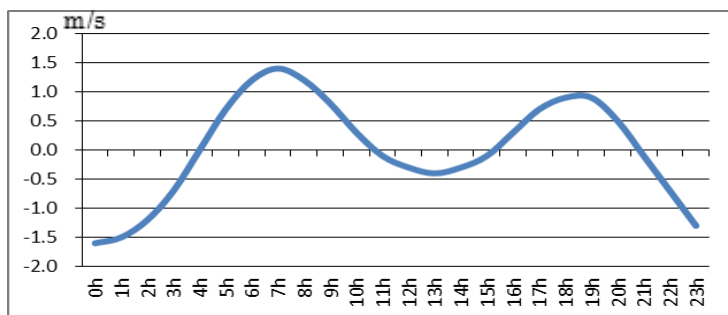
2017. 12. 19



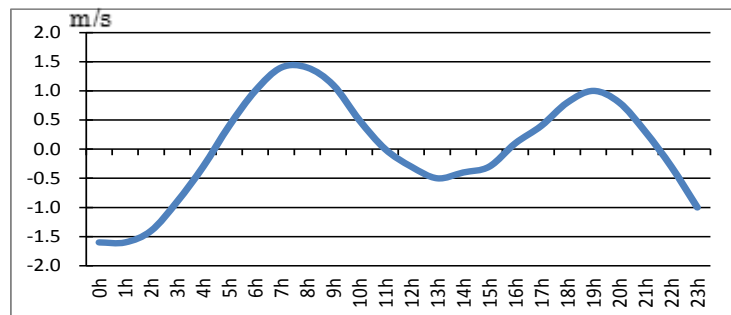
2017. 12. 20



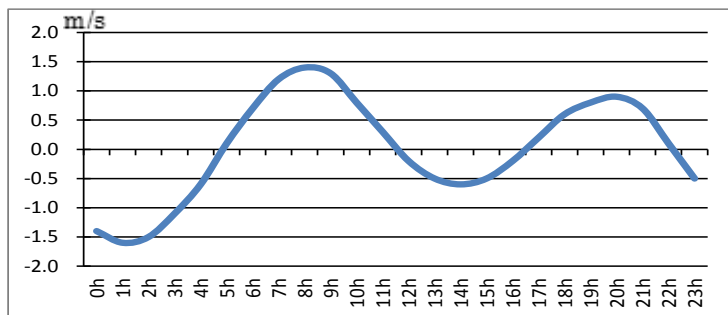
2017. 12. 21



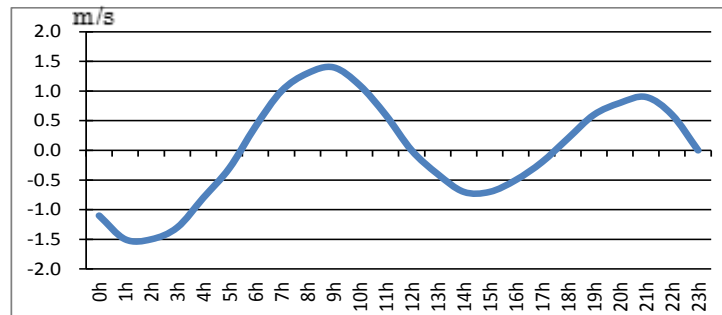
2017. 12. 22



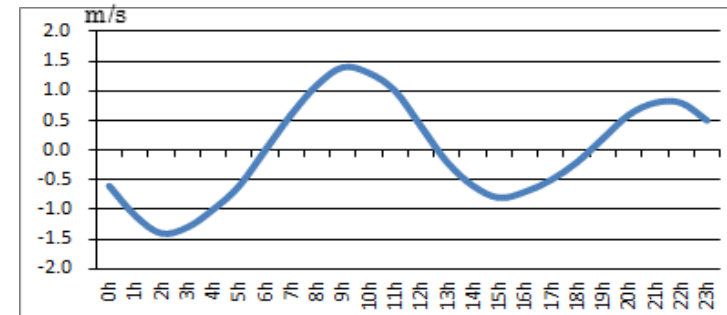
2017. 12. 23



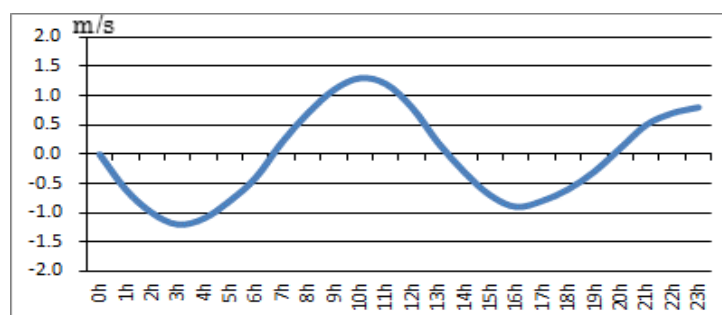
2017. 12. 24



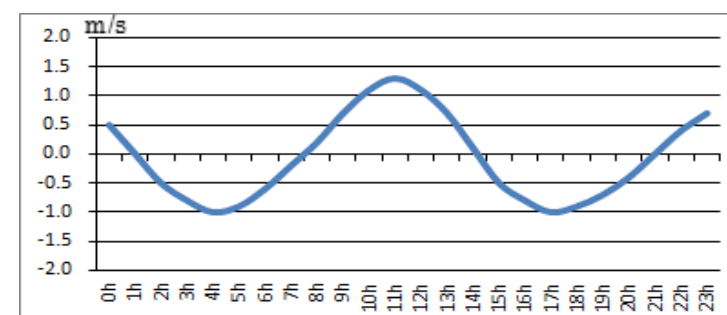
2017. 12. 25



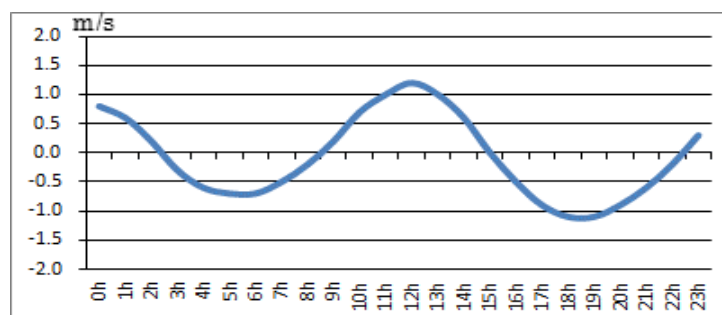
2017. 12. 26



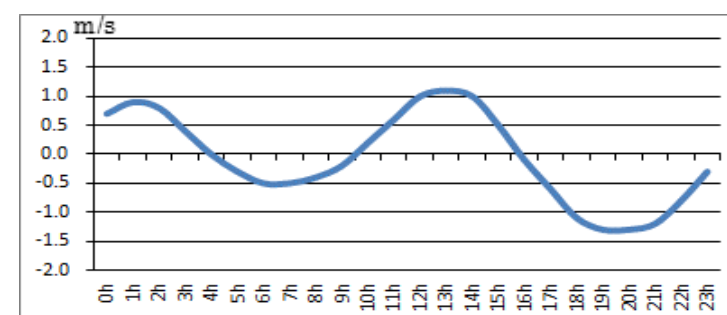
2017. 12. 27



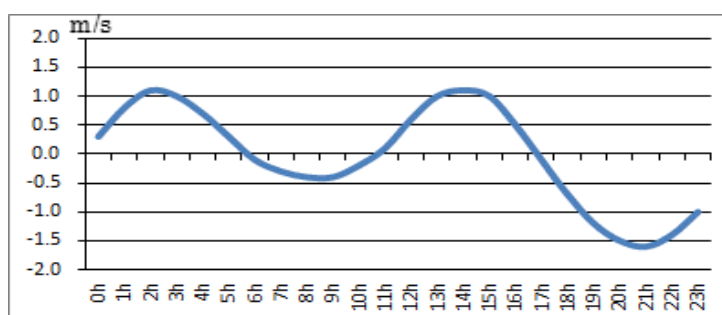
2017. 12. 28



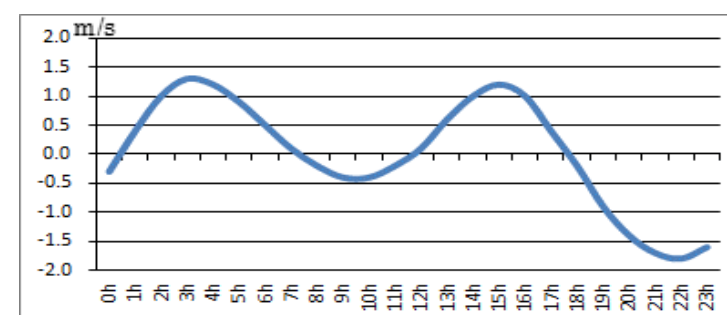
2017. 12. 29



2017. 12. 30



2017. 12. 31



問合せ先



(一財) 日本水路協会 〒144-0041 東京都大田区羽田空港 1-6-6

TEL 03-5708-7135 FAX 03-5708-7075 <http://www.jha.or.jp>