

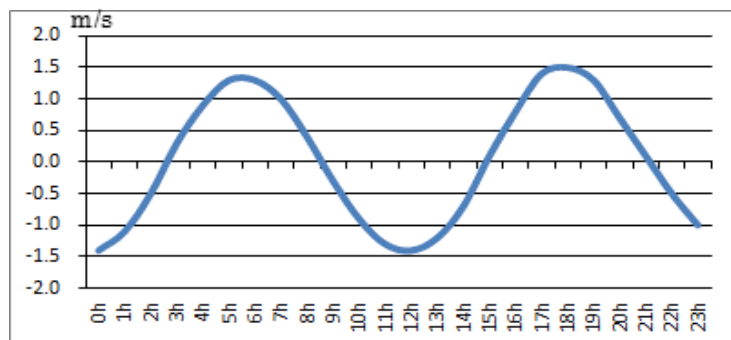
浜名湖今切口付近の強い流れに注意！

浜名湖今切口 4月 1日～ 4月15日の潮流推算値です。

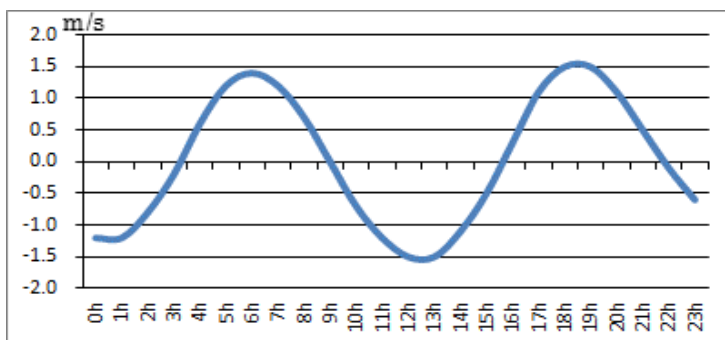
推算値ですので、実際と異なる可能性がありますのでご注意ください。

単位は m/sec で、(+)は海から浜名湖に向かう流れ、(-)は浜名湖から海に向かう流れです。

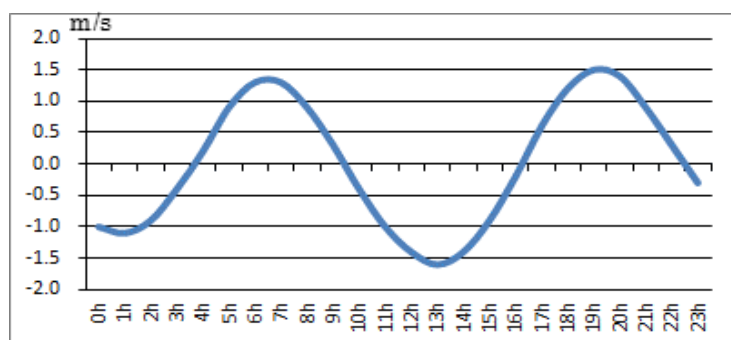
2018. 4. 1



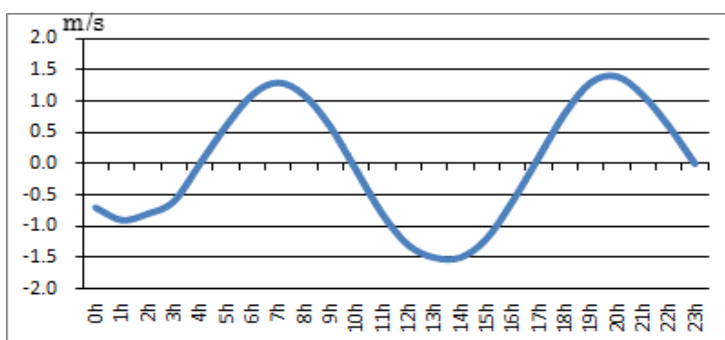
2018. 4. 2



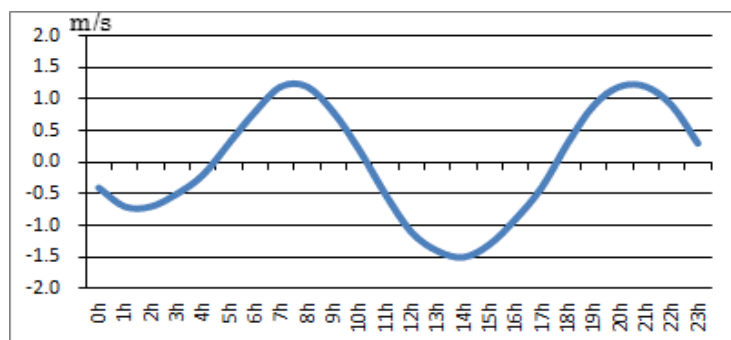
2018. 4. 3



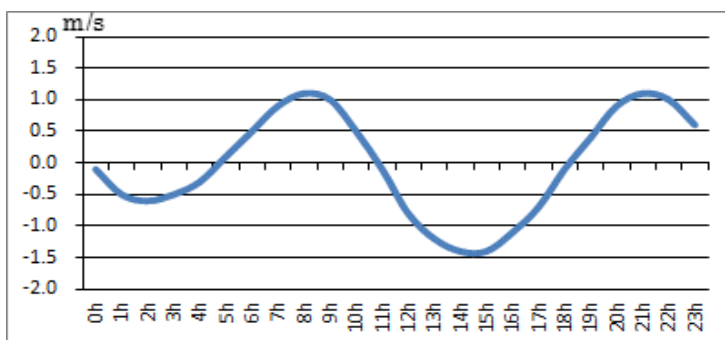
2018. 4. 4



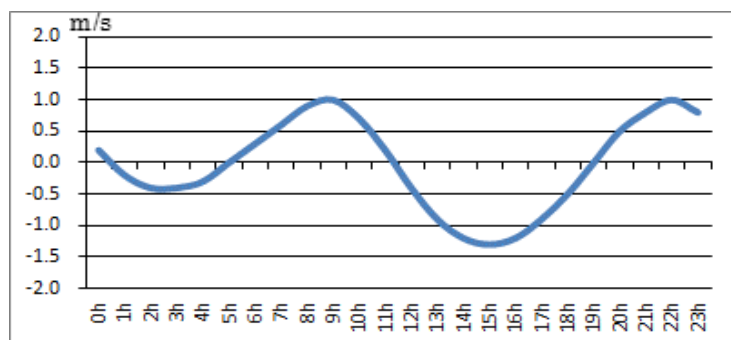
2018. 4. 5



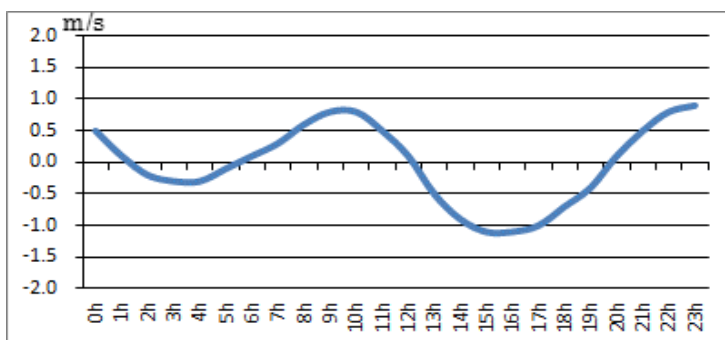
2018. 4. 6



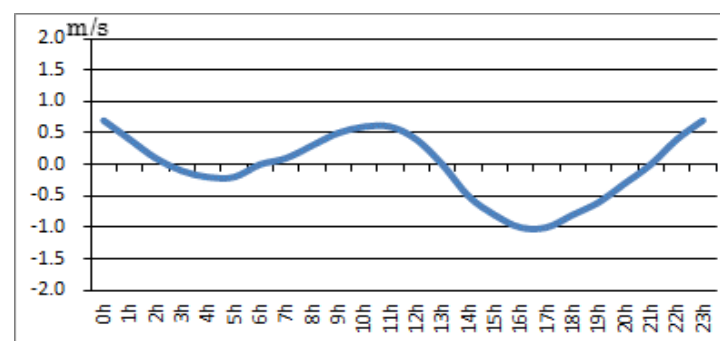
2018. 4. 7



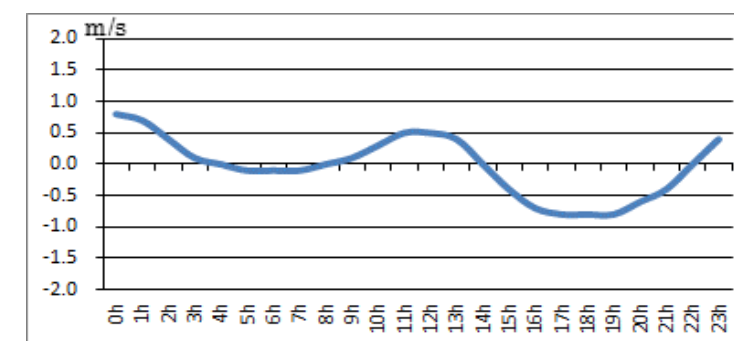
2018. 4. 8



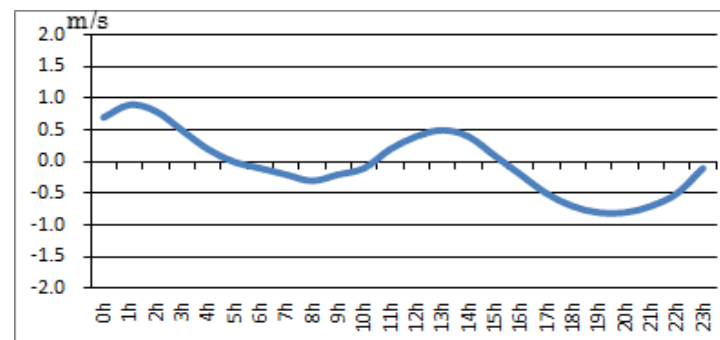
2018. 4. 9



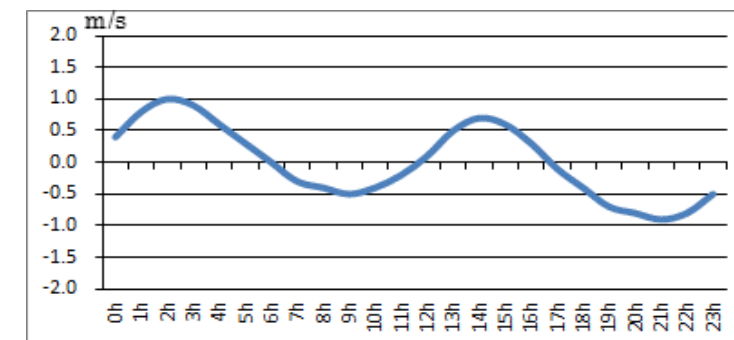
2018. 4. 10



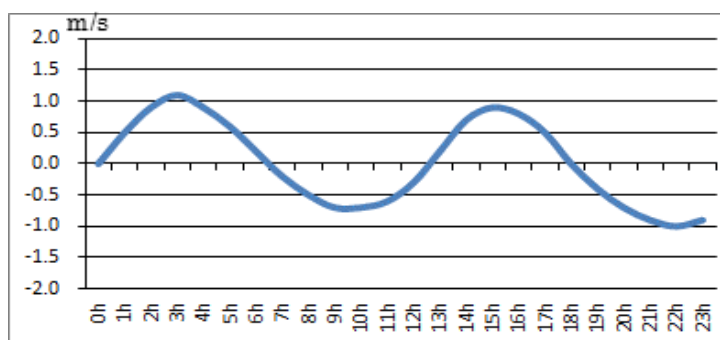
2018. 4. 11



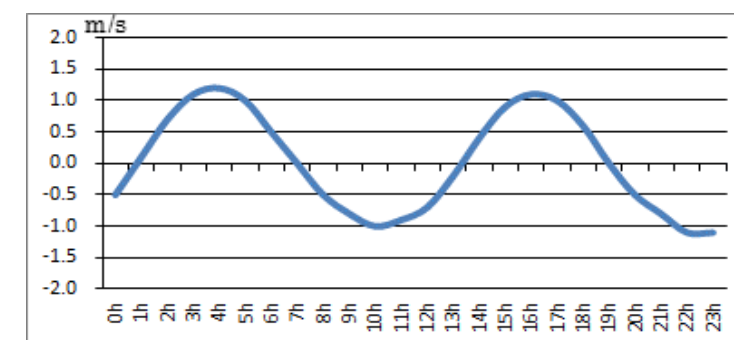
2018. 4. 12



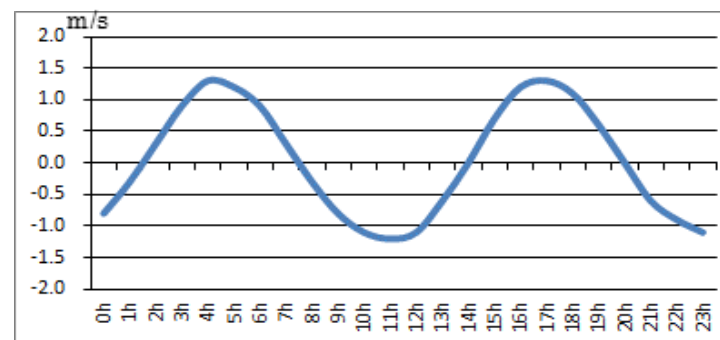
2018. 4. 13



2018. 4. 14



2018. 4. 15



問合せ先



(一財) 日本水路協会 〒144-0041 東京都大田区羽田空港 1-6-6

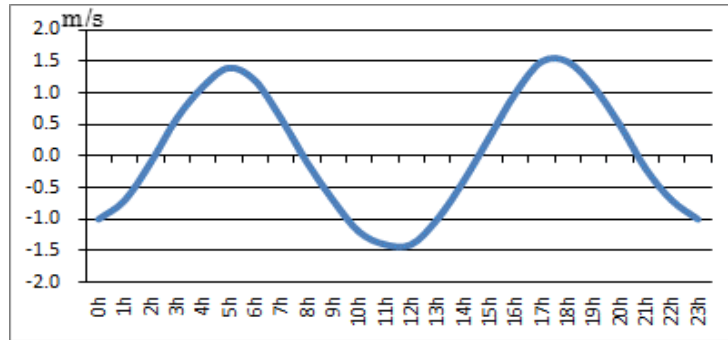
TEL 03-5708-7135 FAX 03-5708-7075 <http://www.jha.or.jp>

浜名湖今切口付近の強い流れに注意！

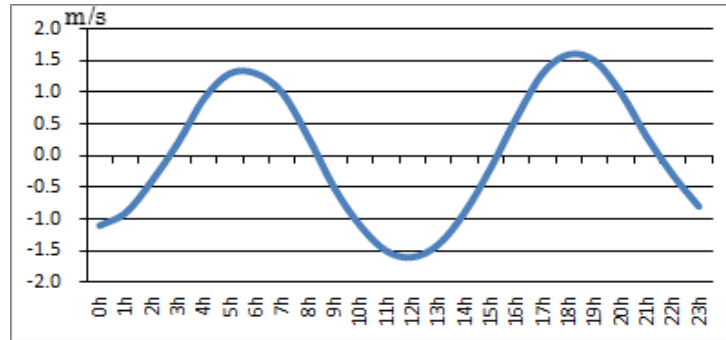
浜名湖今切口 4月16日～4月30日の潮流推算値です。

推算値ですので、実際と異なる可能性がありますのでご注意ください。
単位は m/sec で、(+)は海から浜名湖に向かう流れ、(-)は浜名湖から海に向かう流れです。

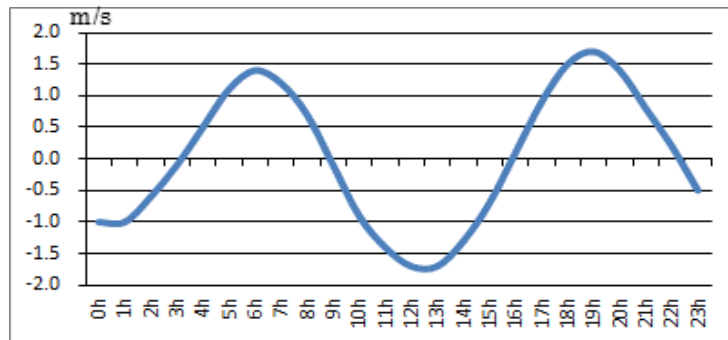
2018. 4. 16



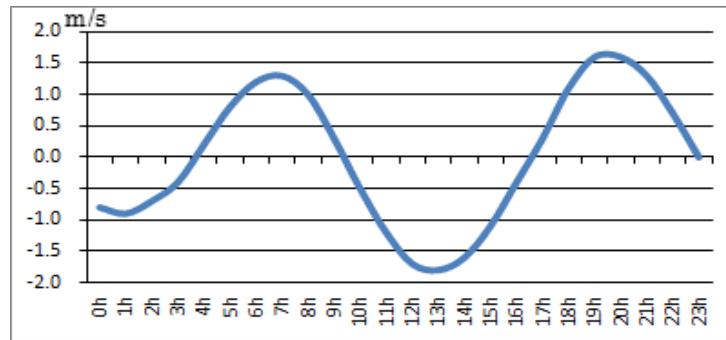
2018. 4. 17



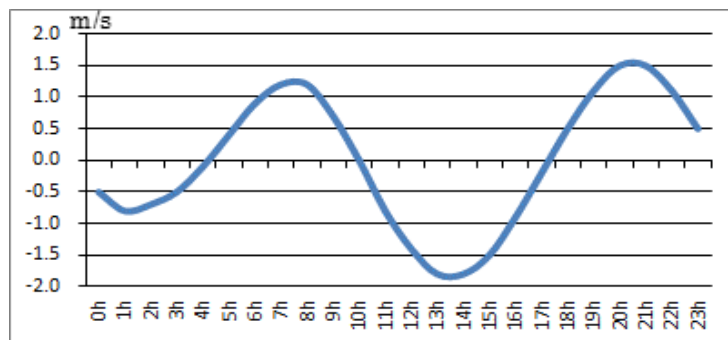
2018. 4. 18



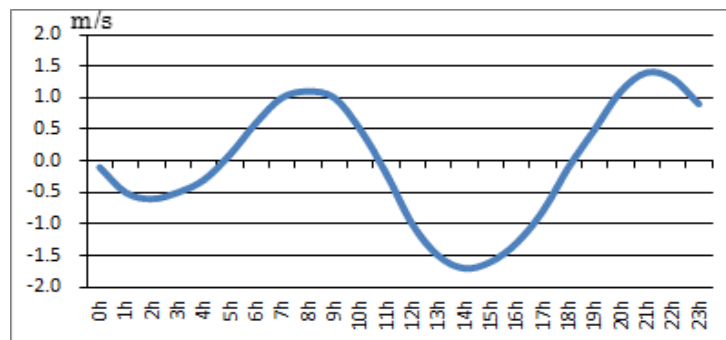
2018. 4. 19



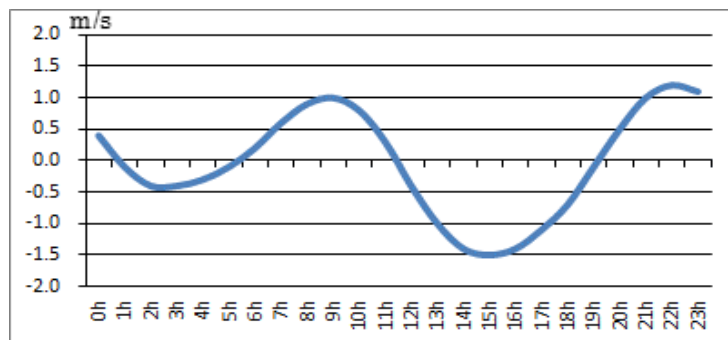
2018. 4. 20



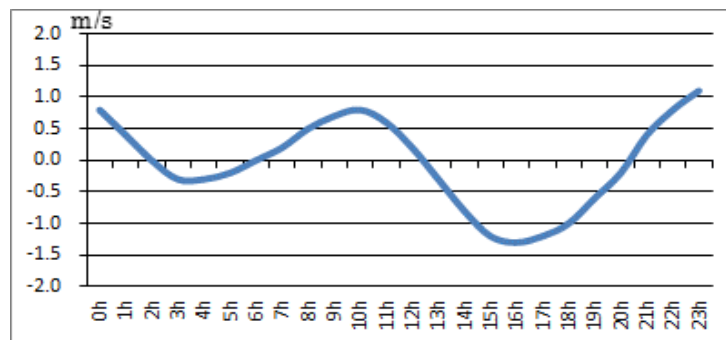
2018. 4. 21



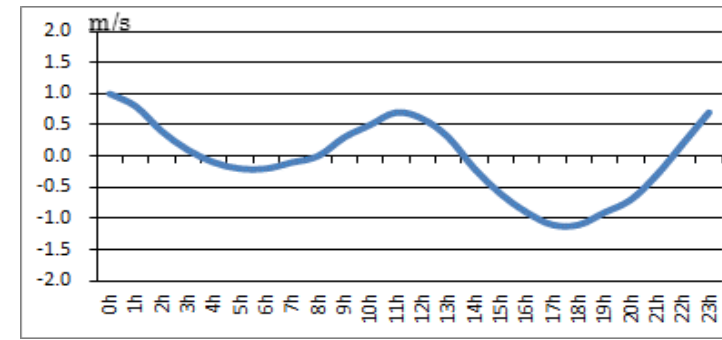
2018. 4. 22



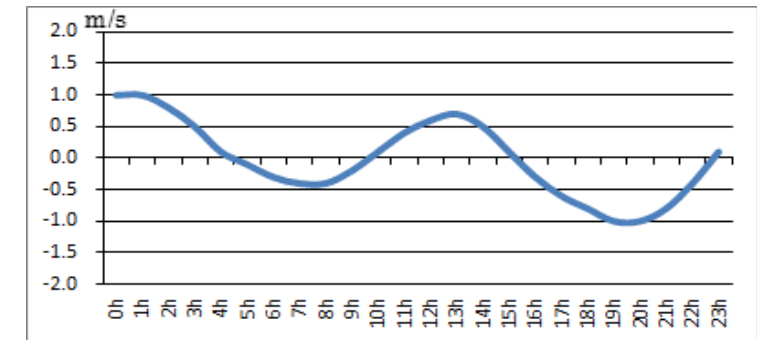
2018. 4. 23



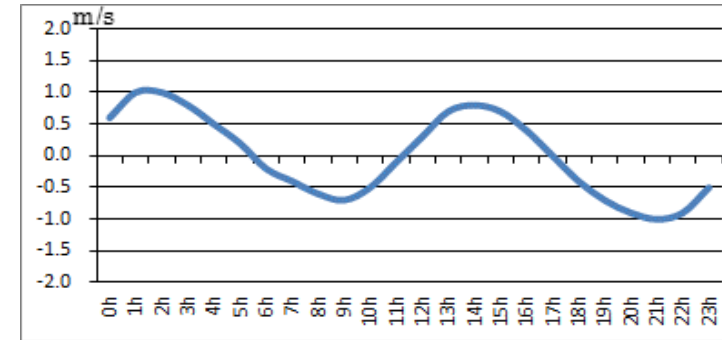
2018. 4. 24



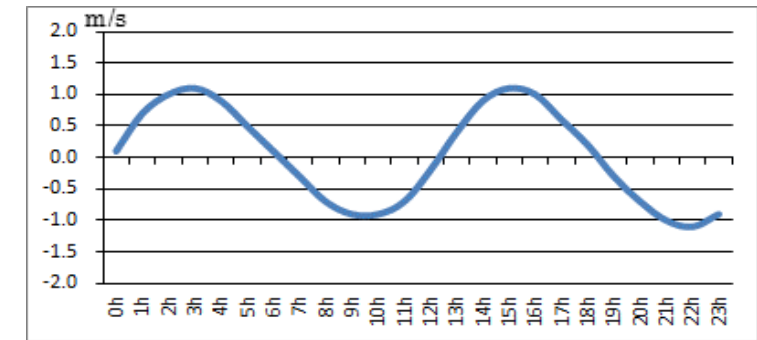
2018. 4. 25



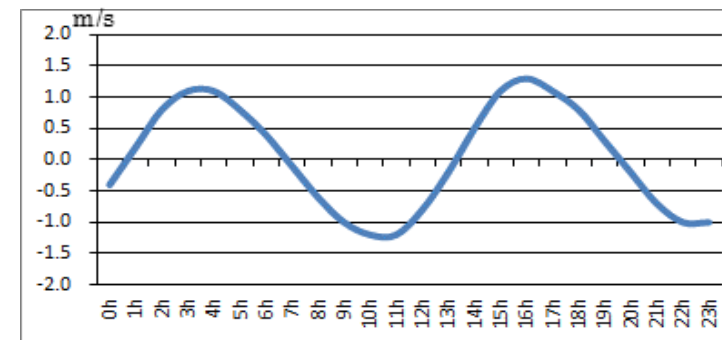
2018. 4. 26



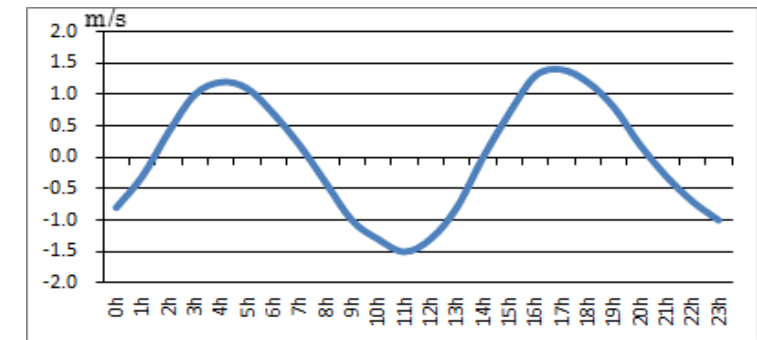
2018. 4. 27



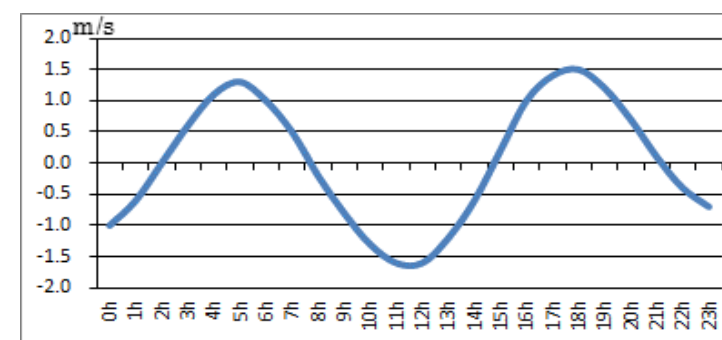
2018. 4. 28



2018. 4. 29



2018. 4. 30



問合せ先



(一財) 日本水路協会 〒144-0041 東京都大田区羽田空港 1-6-6

TEL 03-5708-7135 FAX 03-5708-7075 <http://www.jha.or.jp>