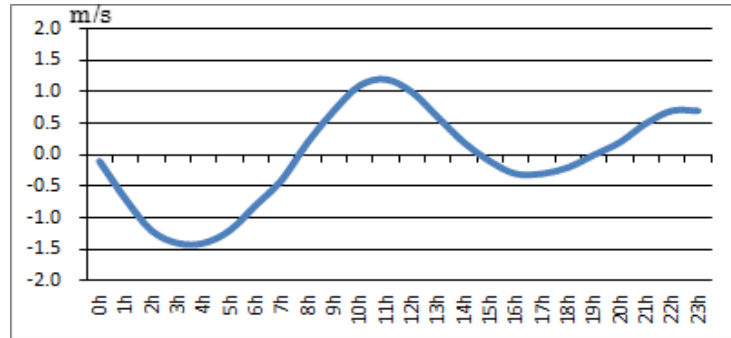


# 浜名湖今切口付近の強い流れに注意！

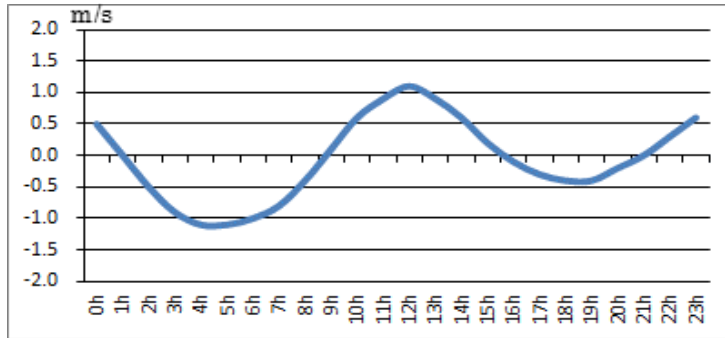
浜名湖今切口11月 1日～11月15日の潮流推算値です。

推算地ですので、実際と異なる可能性がありますのでご注意ください。  
 単位は m/sec で、(+)は海から浜名湖に向かう流れ、(-)は浜名湖から海に向かう流れです。

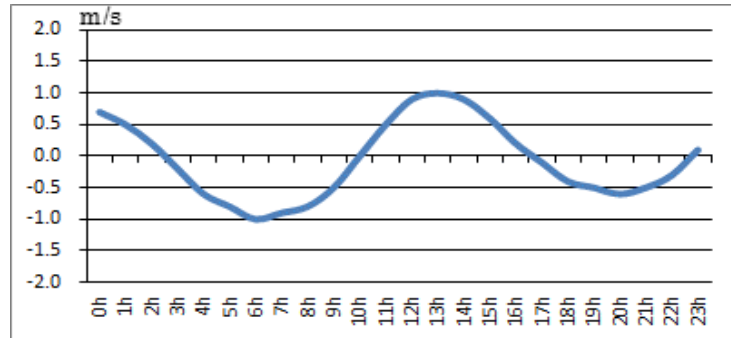
2018.11. 1



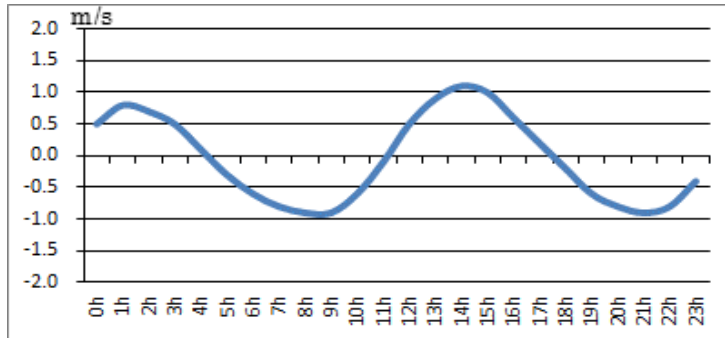
2018.11. 2



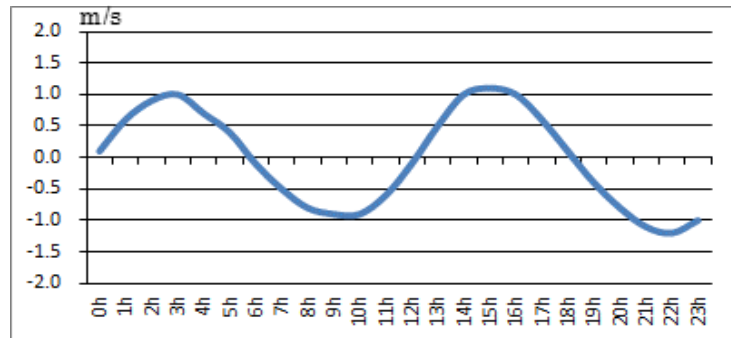
2018.11. 3



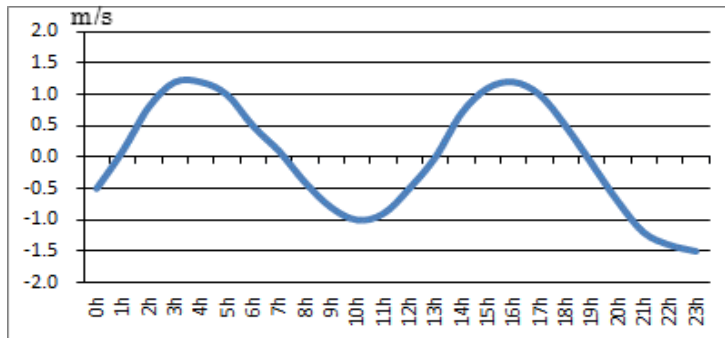
2018.11. 4



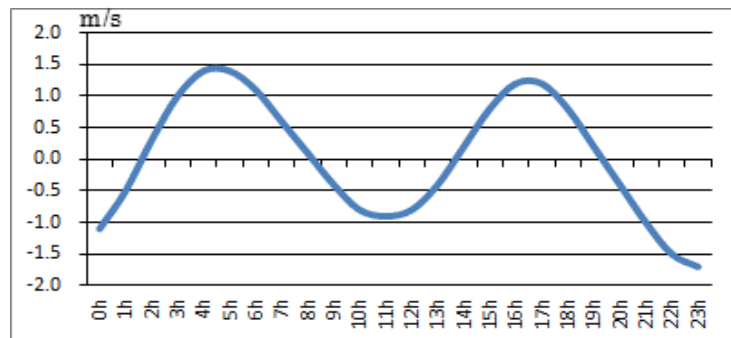
2018.11. 5



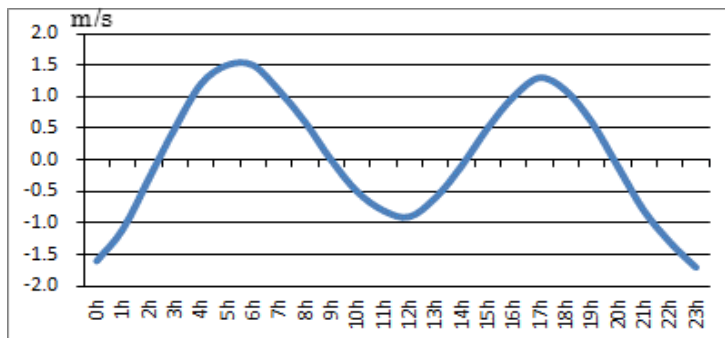
2018.11. 6



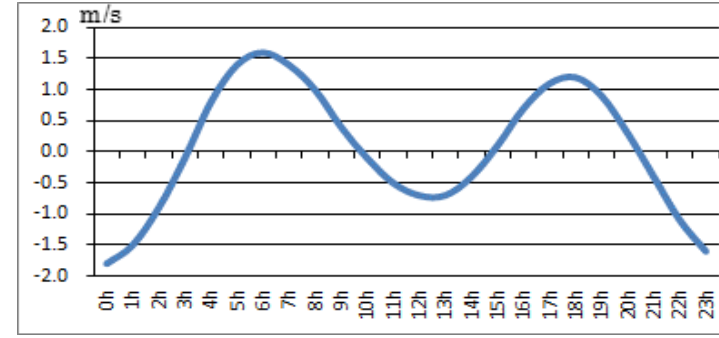
2018.11. 7



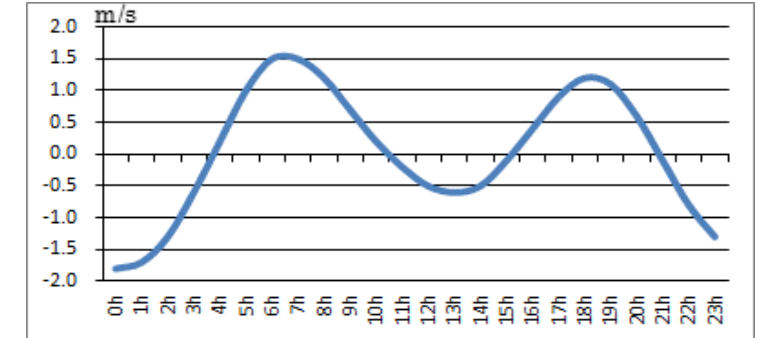
2018.11. 8



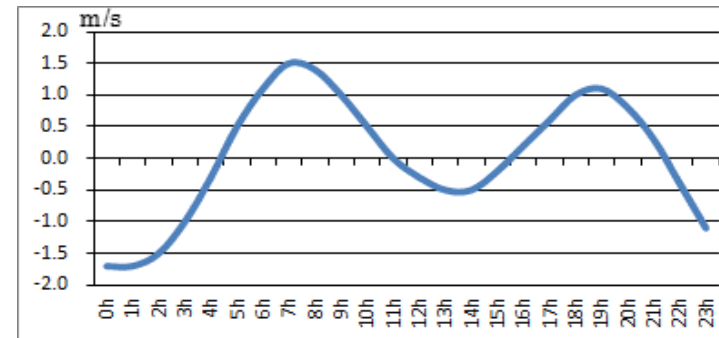
2018.11. 9



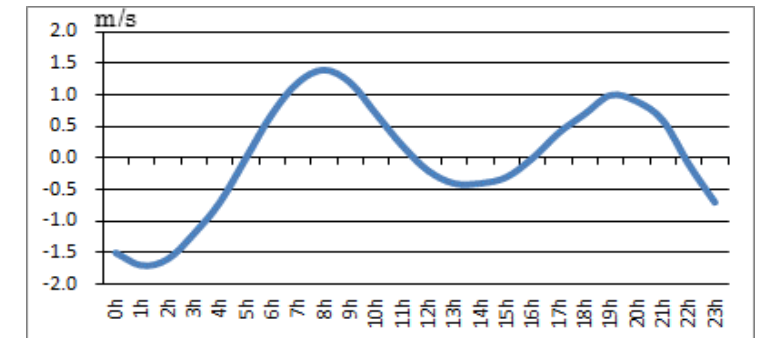
2018.11.10



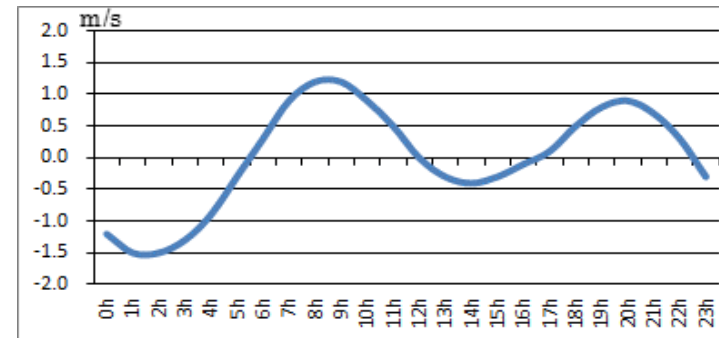
2018.11.11



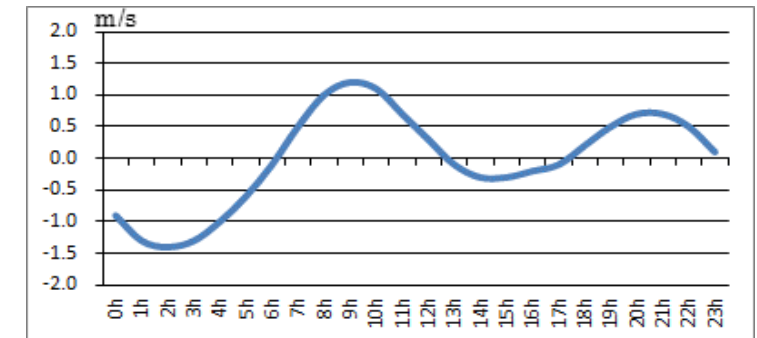
2018.11.12



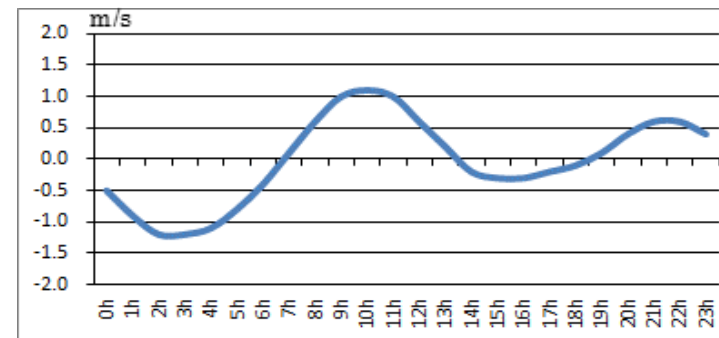
2018.11.13



2018.11.14



2018.11.15



問合せ先



(一財) 日本水路協会 〒144-0041 東京都大田区羽田空港 1-6-6

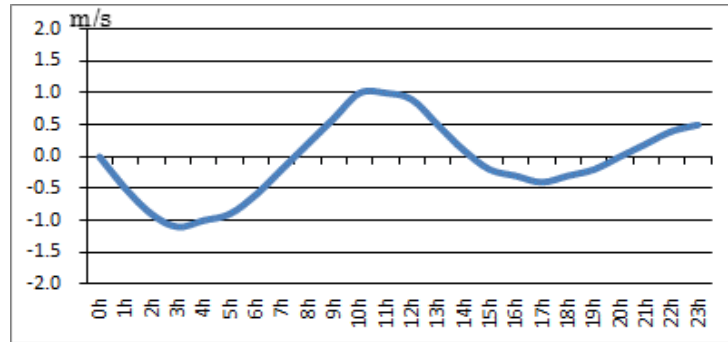
TEL 03-5708-7135 FAX 03-5708-7075 <http://www.jha.or.jp>

# 浜名湖今切口付近の強い流れに注意！

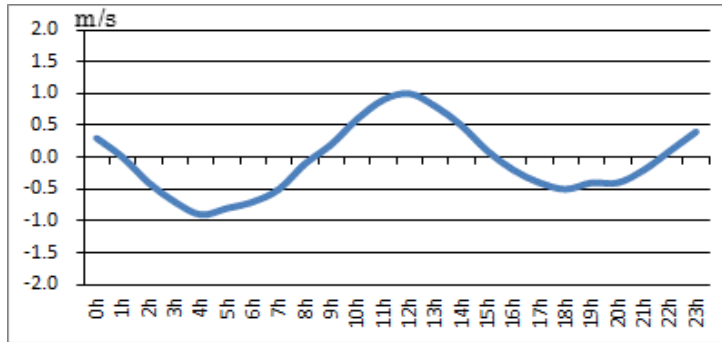
浜名湖今切口11月16日～11月30日の潮流推算値です。

推算地ですので、実際と異なる可能性がありますのでご注意ください。  
単位は m/sec で、(+)は海から浜名湖に向かう流れ、(-)は浜名湖から海に向かう流れです。

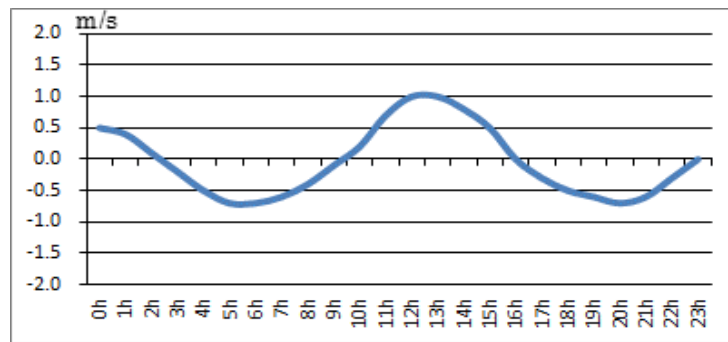
2018.11.16



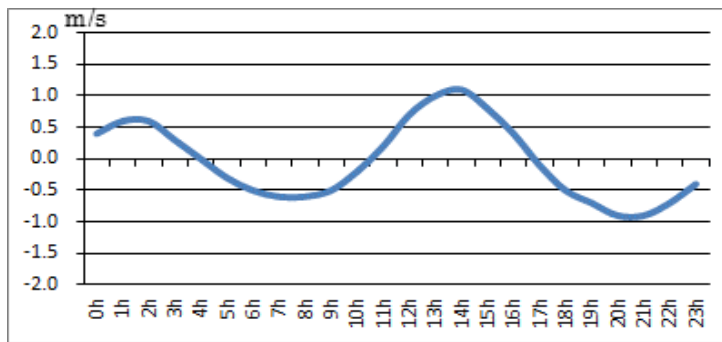
2018.11.17



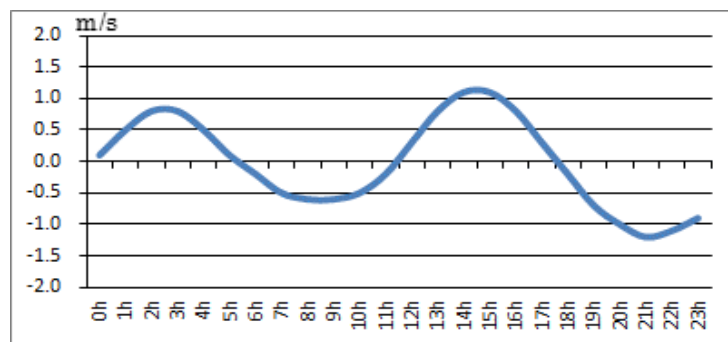
2018.11.18



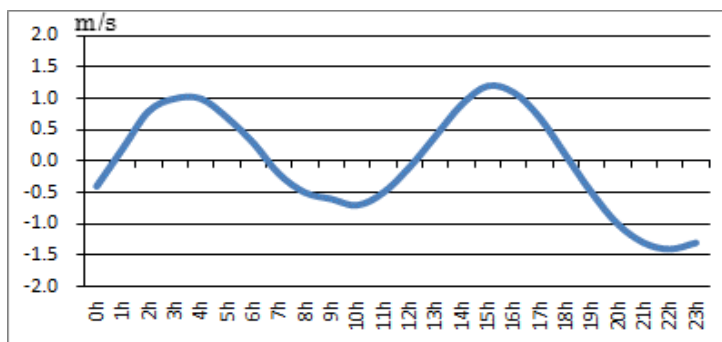
2018.11.19



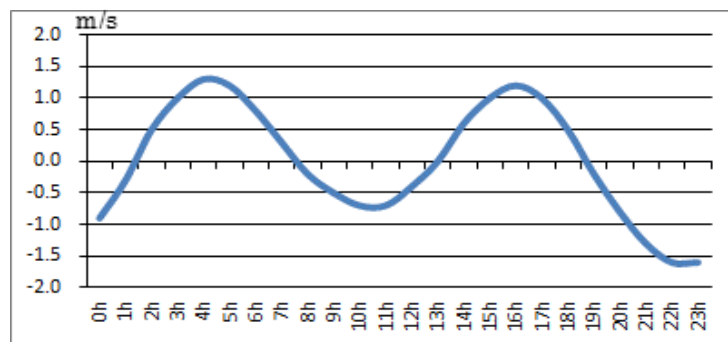
2018.11.20



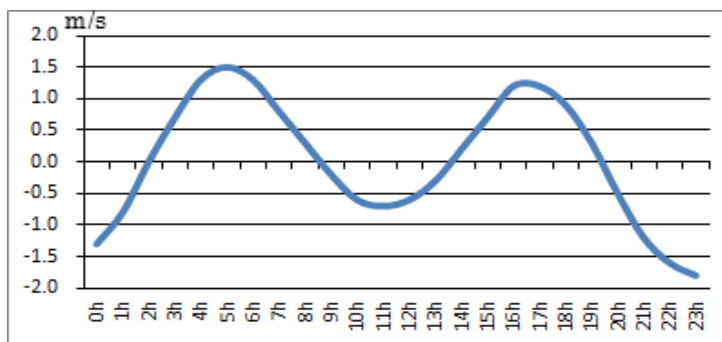
2018.11.21



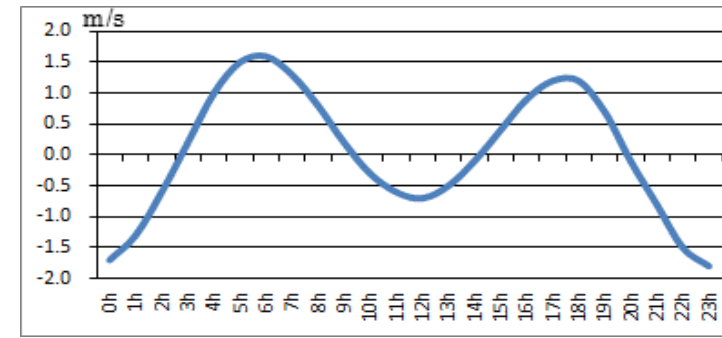
2018.11.22



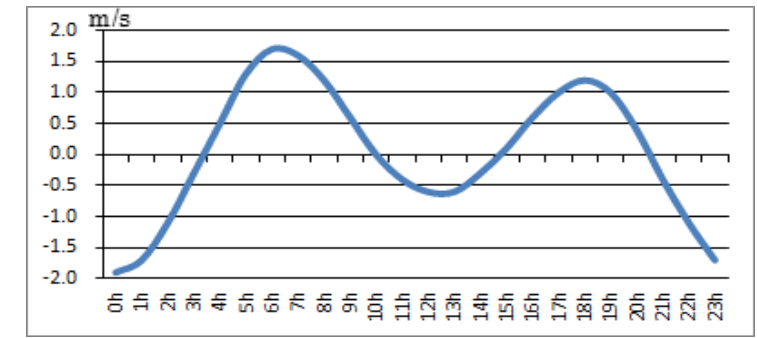
2018.11.23



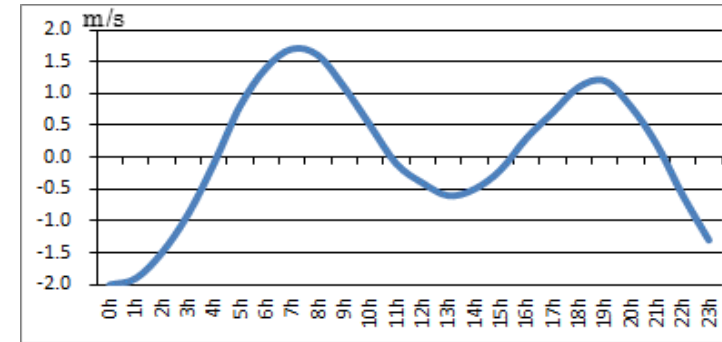
2018.11.24



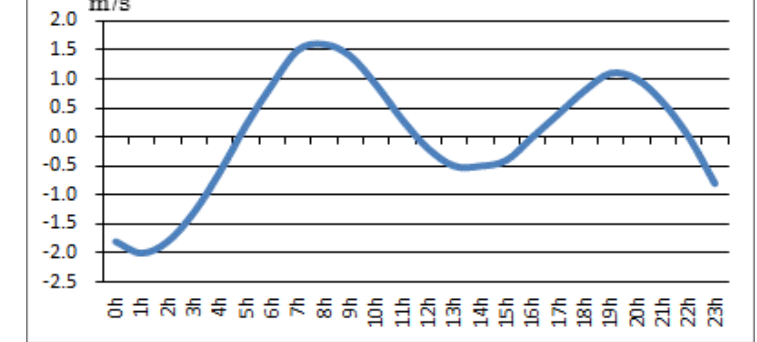
2018.11.25



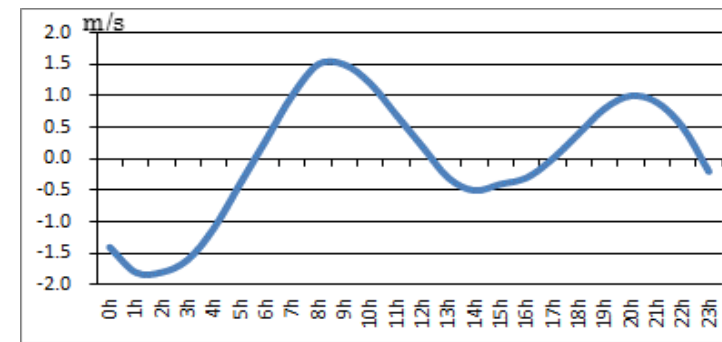
2018.11.26



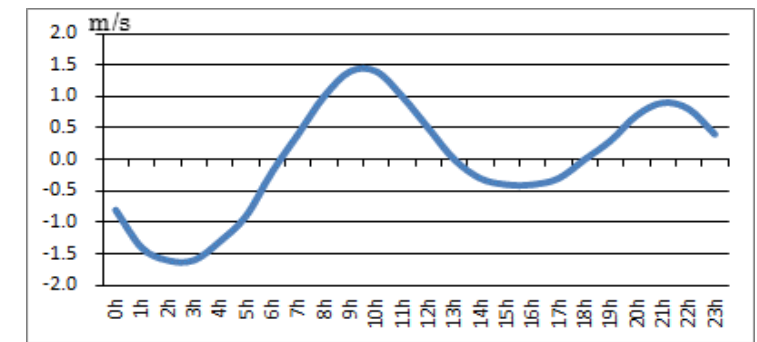
2018.11.27



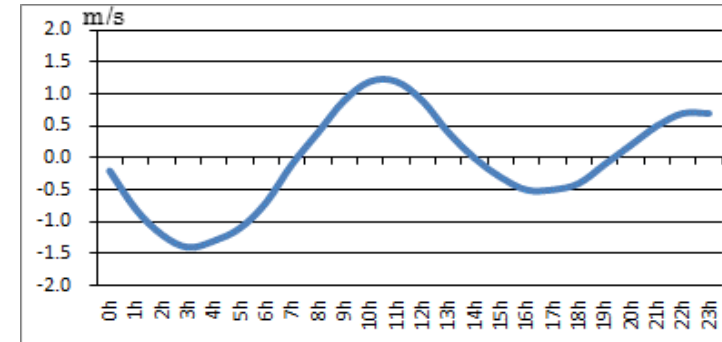
2018.11.28



2018.11.29



2018.11.30



問合せ先



(一財) 日本水路協会 〒144-0041 東京都大田区羽田空港 1-6-6

TEL 03-5708-7135 FAX 03-5708-7075 <http://www.jha.or.jp>